

GENERAL DIRECTIONS FOR ORDERING YOUR SUIT



Read carefully the following directions and order your standard-type or customised suit.

The following suits: IA01801 'Pilota' suit - IA01802 'Trend 2' suit - IA01803 'Super First 2' suit - cannot be customised.

SIZE

Please compare your measurements with the measurements you read in the following table so to identify your exact size.

If you wish to buy a made-to-measure suit, please fill in the 'made-to-measure suit' form which you find attached to the order form.

Extra code to be indicated if you wish to order a made-to-measure suit: IA/724

PATTERNS AND COLOURS

Suits are not only available in the standard patterns and colours, they can also be customised: if you wish to receive more information, please contact our commercial department.

Extra code to be indicated if you wish to order a custom-made coloured suit: IA/725/C

EMBROIDERIES

If you wish to have embroideries sewn on to the belt of your suit, please indicate your name and blood group by using one of the two types of font indicated in the order form. If you wish to have special or customised embroideries sewn on to your suit, please send us a detailed drawing and indicate size and colours of the embroideries. Use the order form to indicate the position of the embroideries on your suit, you can have a specific cost estimate for your custom-made suit.

Extra code to be indicated to have embroideries sewn on to the suit belt: IA/690

HOW TO TAKE WEARERS' MEASUREMENTS

A - CHEST - circumference measure just under the wearer's arms; keep your arms along your body.

B - WAISTLINE - waistline circumference.

C - PELVIS - pelvis circumference; measurements to be taken at the largest point of the buttocks.

D - THIGH - thigh circumference; measurements to be taken at the largest point of the thigh.

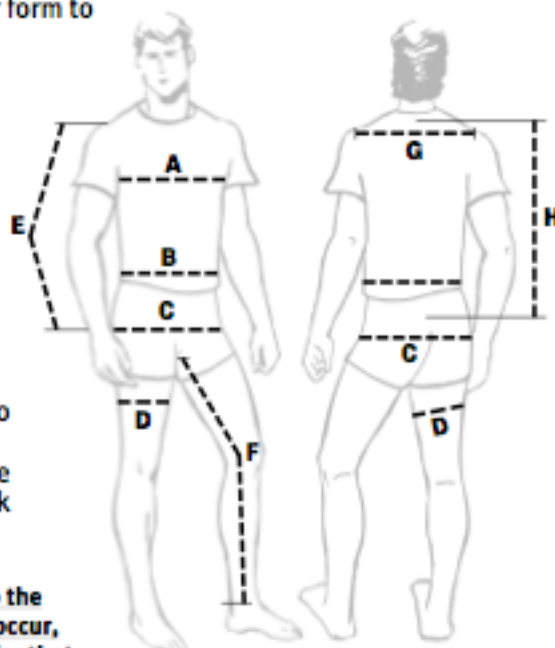
E - ARM - measurements to be taken from the shoulder point to the wrist.

F - INSIDE LEG - measurements to be taken on the internal part of leg, from the groin to the malleolus.

G - SHOULDERS - measurements to be taken from the right shoulder point to the left shoulder point.

H - BACK - measurements to be taken from the base of the neck to the waistline.

WARNING! If mistakes relating to the measures taken by the customer occur, OMP cannot be held responsible for that.



On to the collar of every suit, the FIA homologation number is embroidered in compliance with the regulations in force.



Name of the driver embroidered on to the suit: IA/690

WEARER'S MEASUREMENTS	46	48	50	52	54	56	58	60	62
WEIGHT (kg)	60/70	65/75	70/80	75/85	83/88	85/92	87/95	90/100	95/110
HEIGHT (cm)	158/170	165/175	170/180	173/183	177/187	182/190	185/195	187/198	190/200
A - CHEST (cm)	91/94	95/98	99/102	103/106	107/110	111/114	115/118	119/122	123/126
B - WAISTLINE (cm)	79/82	83/86	87/90	91/94	95/98	99/102	103/106	107/110	111/114
C - PELVIS (cm)	91/94	95/98	99/102	103/106	107/110	111/114	115/118	119/122	123/126
D - THIGH (cm)	51/54	53/56	55/58	57/60	59/62	61/63	63/66	65/68	67/70
E - ARM (cm)	58/62	60/64	62/66	64/68	66/70	68/72	70/74	71/75	71/75
F - INSIDE LEG (cm)	72/76	74/78	76/80	78/82	80/84	82/86	84/88	85/89	85/89
G - SHOULDERS (cm)	39/42	41/45	43/47	45/50	46/51	46/52	47/53	48/54	49/55
H - BACK (cm)	46/49	46/50	47/51	48/52	48/53	49/54	49/55	50/56	51/56



ORDER FORM FOR CUSTOMISED SUITS

WARNING: If not specified, the standard-type sult pattern will be taken as a model.

CUSTOMER	PATTERN	COLOUR
		In case of two-colour suits, the first colour refers to the upper part of the suit.

Do the front part and the back part of the sult look the same? YES NO

STANDARD-TYPE FONTS FOR EMBROIDERIES

ABCDEFBKH *abcde fgh* Font **B**, suggested dimensions from cm. 0.89 to 10.16 in height.

ABCDEFGH *abcde fgh* Font **D**, suggested dimensions from cm. 0.76 to 5.72 in height.

EMBROIDERY ON TO THE BELT YES NO THREAD COLOUR

If an embroidery is requested, what you write in the following box will be sewn on the belt (e.g. Name / Blood group)

QUANTITY	SIZE	Name and/or text that has to be sewn on to the belt

NOTES

CUSTOM-MADE DRAWINGS, COLOUR AND EMBROIDERIES

Please describe your personalization, referring to the directions mentioned in the previous page.

Colour - Indicate the colours you chose on the drawings

Stripes - Indicate their positions and thickness on to the drawings

Colour _____

Neck Jersey Fabric

Colour _____

Wrist cuffs

Colour _____

Ankle cuffs

Colour _____

Piping Colour _____



Shoulder strap Colour _____

Quilting

Thread colour _____

OMP Logo

X-mark its position on to the drawings

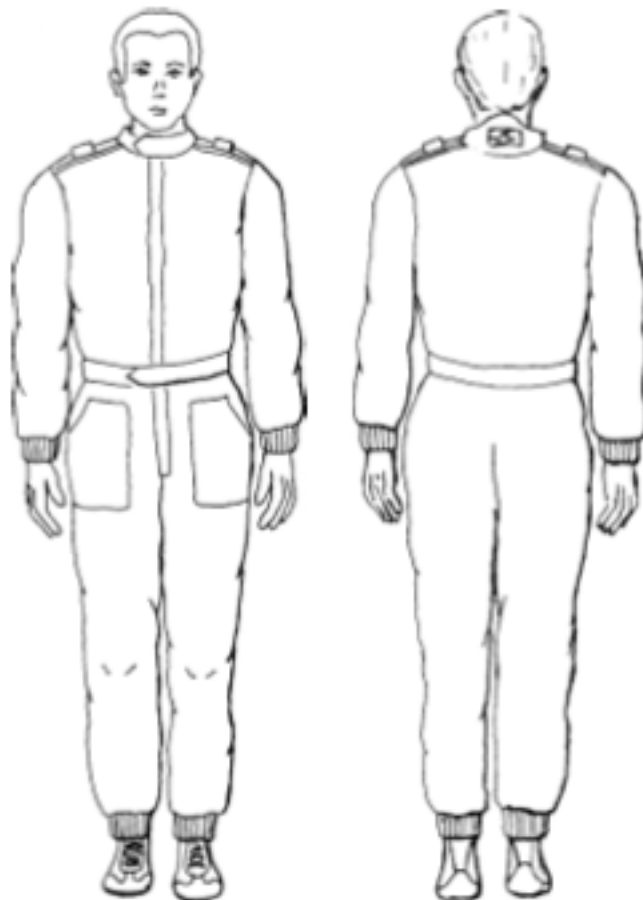
Badge Embroidery

Belt

Colour _____

Shoulder bellows

Colour _____



WEARER'S MEASURES

WEIGHT (kg) _____

HEIGHT (cm) _____

A - CHEST (cm) _____

B - WAISTLINE (cm) _____

C - PELVIS (cm) _____

D - THIGH (cm) _____

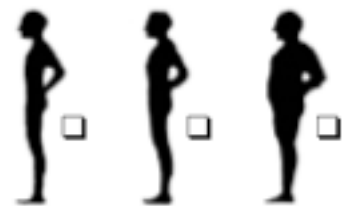
E - ARM (cm) _____

F - INSIDE LEG (cm) _____

G - SHOULDERS (cm) _____

H - BACK (cm) _____

BUILD



Send this order form to:

Fax: (08) 9443-1457

Tel: (08) 9443-4400