



CONTENTS

INTRODUCTION	3	200 SERIES HOSE & HOSE ENDS	22
COMPANY INFORMATION	4	200 Series Teflon® Braided Hose	22
100 SERIES HOSE & HOSE ENDS	6	200 Series Aluminium Hose Ends	22
100 Series Stainless Steel Braided Hose	6	200 Series Steel Hose Ends	23
120 Series Start-Lite® Hose	6	200 Series Female & Male Adapter Hose Ends	23
100 Series Hose Ends	7	200 Series Banjo Hose Ends - Steel & Aluminium	24
400 SERIES HOSE & HOSE ENDS	8	300 Series Banjo Bolts	24
400 Series Pushlock Hose	8	200 SERIES ADAPTERS	25
400 Series Hose Ends	8	310 Series Banjo to Male Flare	25
444 Series EFI Hose	9	200 Series Male Flare Adapters	25
411 Series Hose Ends	9	200 Series Male Flare Adapters	26
150 SERIES COVER CLAMPS	10	Washers & O-Rings	26
150 Series Hose Cover Clamps	10	Hose End Replacement Parts	26
111 Series Stainless Steel Braided Cover	10	TOOLS & MERCHANDISE	27
ALUMINIUM ADAPTERS	11	Hose Cutters, Vice Jaws & Spanners	27
Female Swivel Adapters	11	Decals, Banners & T-Shirts	27
Fuel Pump, Power Steer & Oil Flare Adapters	12	TECHNICAL INFORMATION	28
EFI Adapters	12	AN/JIC Fitting Identification Chart	28
Aluminium Banjo & Bolts	12	NPT & BSP Fitting Identification Chart	28
Carburettor Adapters	13	ASSEMBLY INSTRUCTIONS	29
Carburettor Fuel Line Kits	14	How to Assemble 100 & 120 Series Hose	29
Metric Adapters	15	How to Assemble 200 Series Hose	29
BSP Adapters	15	How to Assemble 400 Series Pushlock Hose	30
Male AN/JIC Adapters	16	399 Series Restrictor Instructions	30
Bulkhead Fittings & Accessories	16	ADVERTISING AND WARRANTY	31
Reducers, Expanders, Extensions, Plugs & Caps	17	Warranty Information	31
Tube Adapters, Nuts & Sleeves	17	Speedflow Advertising	31
NPT Adapters	18		
NPT Adapters	19		
O-Ring Port Adapters	19		
One Way, Blower & Ball Valves	20		
Temperature & Turbo Adapters	20		
Weld on Fittings, Caps and Necks	21		

Teflon® is a registered trademark of DuPont.
Start-Lite® is a registered trademark of Eaton.



Speedflow Products has been proudly manufacturing and supplying quality hose & fittings to the performance industry throughout Australia and the World for over 25 years. Located in Taree NSW, Speedflow has grown to be Australia's number one choice in performance hose & fittings, due to our innovative design, manufacturing and quality control. This is thanks to our skilled staff and the ability to control every aspect of manufacturing, from machining, polishing, anodising, to assembly and packaging.

Now, in a new era with new leadership we are expanding our machining capabilities with our in house built CNC Lathes and Mills to further improve our quality, reliability and efficiencies.

We have moved our distribution to a new building with more space to hold more stock including our entire range being available in Black. We also offer a comprehensive Custom Anodising Program utilising our standard colour range and all parts are now bar coded and labelled as part of our packaging process.

A host of future improvements are planned to expand our range to accommodate the latest trends and initiatives to make Speedflow a world leader in the performance hose & fitting market!

At Speedflow, we strive for perfection in manufacturing to make the product superior to all others!

Shaun Liefing
Director
Speedflow Products Pty Ltd

SPEEDFLOW

Australian Made Performance Hose Fittings

COMPANY INFORMATION

Speedflow Products was founded in 1983 to manufacture premium quality performance hose fittings in Australia for the motorsport and automotive industry.

From our Taree, NSW factory, Speedflow have now been supplying products to the motorsport industry throughout Australia and the world with stockiest in: England, France, Italy, the Middle East, New Zealand, Indonesia and the USA!

Speedflow has invested in the latest technology with some of the most sophisticated CNC machinery including manufacturing CNC lathes of our own design specifically suited to producing top quality products. We now have in excess of 25 CNC machines as well as cutting edge anodising equipment, polishing machines and a host of other ancillary equipment required to manufacture the best quality fittings available!

We produce innovative, high quality products that are unique due to the one piece formed bends with a smooth radial flow that are stronger and more compact than any other on the market today!

These robust full flow fittings are not made the conventional way by brazing but are bent in specialised equipment to produce a compact solid one piece bend, which are as low and strong as a forged fitting but with the advantage of a swept full flow bend.

All other components are made from billet material, we use no castings or forging which means there are no hidden flaws and an appealing billet finish is achieved with superior physical shape.

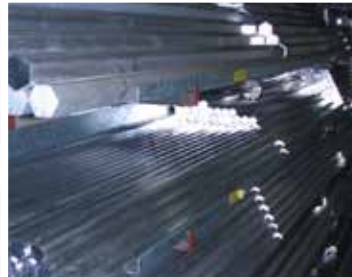
All aspects of manufacturing, from machining to packaging are done from our factory to provide absolute control of every product through every process. Our skilled staff are an important asset to us, all of whom are local residents, some with 20 plus years of service!

We anodise all of our own products using a specialised hard coat anodising system for extra hard wearing properties and we are able to apply a decorative colour. All other companies will use a bright dip process which does not give the protection like our hard coat system. We also provide custom anodising for any part in our range and now include our Black Series as a standard colour option.

Speedflow's steel range of fittings are plated with the Electroless Nickel Process, which offers a highly durable uniform coating providing a bright finish, high degree of corrosion resistance and a degree of lubricity to reduce galling problems associated with stainless steel.

Our new 400m² sales & distribution centre is now completed, with dedicated storage for all our completed fittings, our entire hose stocks and raw aluminium stocks. This has allowed us to separate our sales and production offices to further improve efficiencies.

Speedflow has certainly delivered on our original goal to produce and supply the best quality products to the Australian market. With our ongoing research and development in the demanding high pressure motorsport environment and our continual growth of new products, Speedflow will continue to manufacture, supply and support the performance industry well into the future!



Walter Rohrl, multiple world rally champion in a Lancia 037 Group B completely restored with Speedflow Products.



Italian Historic Car Championships



Maurice Fabietti - 5.84 & 250.51mph



Dick Ward - Fiat Abarth



Matt Hunter - Pitcrew Racing



Arthur Alexiou



Ben Bray - Pro Compact



Kelly Corbett - Modified National Champ



Maritimo Racing - Offshore Powerboats



Andrew Musgrave - Modified

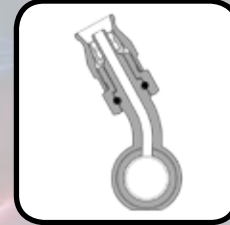
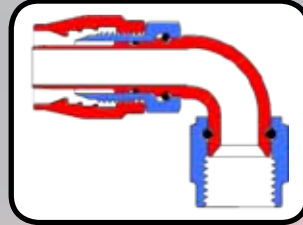
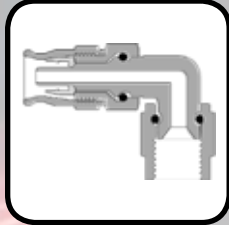
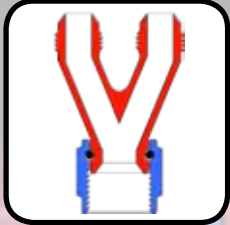


GT40 - Foto Forchini

INNOVATIVE ENGINEERING

Speedflow have 25 plus years of research and development and have state of the art machinery to produce the worlds most compact and strongest hose ends and adapters. Our bends are as low and strong as forged fittings but with the advantage of a swept full flow bend.

Speedflow fittings are made from marine quality 6061 billet aluminium for strength, quality of finish, superior corrosion and fatigue resistance.



• **MADE IN AUSTRALIA SINCE 1983**

- **SUPERIOR DESIGN**
- **ONE PIECE FORMED BENDS**
- **COMPLETE RANGE -3 TO -20**
- **STRONGEST & MOST COMPACT**
- **BILLET 6061 ALUMINIUM**
- **METRIC, IMPERIAL, BSPP**
- **CUTTER STYLE HOSE ENDS**
- **ROTATABLE AFTER ASSEMBLY**
- **HARD COAT ANODISING**
- **ENS COATED STEEL**
- **CHOICE OF MOTORSPORT PROFESSIONALS**



Sicilia Rally Porsche



Foto Forchini



Jason Maggs - Competition Eliminator



Matthew White Racing - Fujitsu Series



Speedflow are proud supporters of the Saintry Top Fuel Operation



Bryan Mann - WSS Sprintcar



Jim Ioannidis - Super Stock



Stinga - 6 x Bridge to Bridge Winner!



Glen Suckling NZ - 7/91 @ 181.57mph

100 SERIES HOSE



100 SERIES STAINLESS STEEL BRAIDED HOSE

Speedflow 100 series hose is the premier stainless steel nitrile hose. Manufactured in the USA specifically for Speedflow Products, this hose has been used by motorsport professionals all over Australia and the world! Designed for use with our wide variety of 100 series hose ends to provide essential protection and resistance to high pressure, temperature, and chafing! It is constructed of a seamless synthetic nitrile inner tube with an integral stainless steel braid and a high tensile stainless steel outer braid. Speedflow' 100 Series hose has the highest corrosion and fire resistance of any other nitrile braided hose on the market. Suitable for use with synthetic lubricants, fuels*, oils, air, coolant and alcohol including methanol and nitromethane! *Check out the chart below for correct uses!

Temperature Range: -46°C (50.8°F) to 150°C (302°F).

SIZE	PART NO.	INSIDE DIA.		OUTSIDE DIA.		OPERATING PRESS.		BURST PRESS.		WEIGHT		BEND RADIUS	
		INCH	MM	INCH	MM	PSI	BAR	PSI	BAR	KG/M	LB/FT	INCH	MM
-4	100-04	0.219	5.56	0.438	11.13	1000	69	6000	420	0.167	0.112	2.00	50.80
-6	100-06	0.344	8.73	0.547	13.89	1000	69	6000	420	0.201	0.135	2.50	63.50
-8	100-08	0.438	11.12	0.641	16.28	1000	69	5000	350	0.271	0.182	3.50	88.90
-10	100-10	0.562	14.27	0.797	20.24	1000	69	5000	350	0.348	0.234	4.00	101.60
-12	100-12	0.688	17.47	0.928	23.82	1000	69	3750	263	0.421	0.283	4.50	114.30
-16	100-16	0.875	22.22	1.156	29.36	750	52	2500	175	0.552	0.377	5.50	139.70
-20	100-20	1.125	28.70	1.437	36.49	500	35	2000	138	0.732	0.492	8.00	203.30



120 SERIES START-LITE® HOSE

Lightweight and Durable; Race proven in NASCAR, NHRA, IHRA & IRL. Made from smooth-bore CPE liner with pre-dyed BLACK Nomex® cover with a RED tracer. Start-Lite® hose assemblies are lighter in weight than conventional high performance assemblies. Use 100 Series reusable Hose Ends, no crimping machines or special tools are required! Applications: Fuel*, lube, coolant, air. *Check out the chart below for correct uses!

Temperature Range: -46°C (-50.8°F) to 150°C (302°F)

SIZE	PART NO.	INSIDE DIA.		OUTSIDE DIA.		OPERATING PRESS.		BURST PRESS.		WEIGHT		BEND RADIUS	
		INCH	MM	INCH	MM	PSI	BAR	PSI	BAR	KG/M	LB/FT	INCH	MM
-6	120-06	0.344	8.73	0.547	13.89	200	14	n/a	n/a	0.119	0.08	2.50	63.50
-8	120-08	0.438	11.12	0.641	16.28	200	14	n/a	n/a	0.134	0.09	3.50	88.90
-10	120-10	0.562	14.27	0.797	20.24	200	14	n/a	n/a	0.209	0.14	4.00	101.60
-12	120-12	0.688	17.47	0.928	23.82	100	7	n/a	n/a	0.239	0.16	4.50	114.30
-16	120-16	0.875	22.22	1.156	29.36	100	7	n/a	n/a	0.283	0.19	5.50	139.70

Teflon® & Nomex® are registered trademarks of DuPont.

Start-Lite® is a registered trademark of Eaton.

SELECTING THE RIGHT HOSE FOR THE APPLICATION!

Due to the introduction of new blends of unleaded fuels (ULP) and fuel additives from all manufacturers in recent years it has become increasingly difficult to assure the compatibility of these fuels with the current hose constructions.

Currently the best hose option for use with unleaded petrol is the 200 series Teflon® hose (-6, -8 and -10 sizes have a carbon lining to prevent static build up).

The construction of the -6 and -8 100 series hose has been modified to be more compatible with unleaded fuels but as of yet extended testing results are not available.

Below is a guide to uses of the 100 & 120 Series Hoses.

100 & 120 Series	Uses:	Fuel Systems, Coolant Systems & Oil Pressure Systems.
	Compatibility:	Methanol, Water, Oil & Unleaded Fuel (see note below).
	Restrictions:	Not recommended for use in confined areas such as trunks/boots and cabin areas with Unleaded Fuel due to permeation of fuel vapours. Not to be used with brake fluids. Not recommended for use around extreme heat sources such as turbo's.

100 SERIES HOSE ENDS

100 SERIES HOSE ENDS

Speedflow is Australia's premier manufacturer of performance hose ends. Made from 6061 grade aluminium and utilising our unique full flow formed bend which is the strongest and most compact hose end bend in the industry! We only manufacture the cutter style which is engineered to securely fit our 100 series hose for a perfect seal every time! All our hose ends can be rotated once assembled and are beautifully finished in a hard coat anodise with a decorative colour, either in standard red and blue or black. We can custom anodise to your specification.



STRAIGHT HOSE ENDS	
PART NO.	SIZE
101-04	-4
101-06	-6
101-08	-8
101-10	-10
101-12	-12
101-16	-16
101-20	-20

30° HOSE ENDS	
PART NO.	SIZE
-	-4
107-06	-6
107-08	-8
107-10	-10
107-12	-12
107-16	-16
107-20	-20

45° HOSE ENDS	
PART NO.	SIZE
102-04	-4
102-06	-6
102-08	-8
102-10	-10
102-12	-12
102-16	-16
102-20	-20

60° HOSE ENDS	
PART NO.	SIZE
-	-4
108-06	-6
108-08	-8
108-10	-10
108-12	-12
108-16	-16
108-20	-20



90° HOSE ENDS	
PART NO.	SIZE
103-04	-4
103-06	-6
103-08	-8
103-10	-10
103-12	-12
103-16	-16
103-20	-20

120° HOSE ENDS	
PART NO.	SIZE
-	-4
104-06	-6
104-08	-8
104-10	-10
104-12	-12
104-16	-16
104-20	-20

150° HOSE ENDS	
PART NO.	SIZE
-	-4
105-06	-6
105-08	-8
105-10	-10
105-12	-12
105-16	-16
105-20	-20

180° HOSE ENDS	
PART NO.	SIZE
-	-4
106-06	-6
106-08	-8
106-10	-10
106-12	-12
106-16	-16
106-20	-20



BSPP HOSE ENDS		
PART NO.	SIZE	BSPP
121-08-08	-8	1/2" inv

SPEEDFLOW BLACK SERIES



SPEEDFLOW BLACK SERIES IS HERE!
OUR ENTIRE RANGE IS AVAILABLE IN A
TUFF - BLACK ANODISED FINISH.
TO ORDER ADD -BLK TO PART NO.

SPEEDFLOW CUSTOM SERIES



SPEEDFLOW OFFERS A SPECIAL ORDER
ANODISING SERVICE TO GIVE YOUR
VEHICLE A COMPLETE CUSTOM LOOK!
CALL FOR MORE INFO!

400 SERIES HOSE & HOSE ENDS



400 SERIES PUSHLOCK HOSE

Our 400 series hose is manufactured by Gates and designed specifically for 400 series pushlock style fittings. This hose has an elastomer tube but with a smooth outer cover. This is not recommended for use with unleaded fuels or use in high pressure applications or suction systems. This hose suitable for use with synthetic lubricants, oils, air, coolant and methanol. Add BLUE or BLACK to part number when ordering.

Temperature Range: -46°C (-50.8°F) to 150°C (302°F)

SIZE	PART NO.	INSIDE DIA.		OUTSIDE DIA.		OPERATING PRESS.		BURST PRESS.		WEIGHT		BEND RADIUS	
		INCH	MM	INCH	MM	PSI	BAR	PSI	BAR	KG/M	LB/FT	INCH	MM
-4	400-04	0.250	6.35	0.500	12.70	250	17	1000	69	0.10	0.07	3.00	76.20
-6	400-06	0.375	9.53	0.620	15.75	250	17	1000	69	0.16	0.11	3.00	76.20
-8	400-08	0.500	12.70	0.750	19.05	250	17	1000	69	0.22	0.15	5.00	127.00
-10	400-10	0.625	15.88	0.900	22.86	250	17	1000	69	0.30	0.20	6.00	152.40
-12	400-12	0.750	19.05	1.030	26.16	250	17	1000	69	0.36	0.24	7.00	177.80

ADD BLUE OR BLACK TO PART NUMBER WHEN ORDERING.

400 SERIES HOSE ENDS

Speedflow makes a complete range of 400 series hose ends to suit our 400 Series hose. Made in Australia from 6061-T6 grade aluminium and utilising our unique full flow formed bend which is the strongest and most compact hose end bend in the industry! All our hose ends are beautifully finished in a hard coat anodise with a decorative colour, either in standard red and blue or black. We can custom anodise to your specification.



STRAIGHT HOSE ENDS

PART NO.	SIZE
401-04	-4
401-06	-6
401-08	-8
401-10	-10
401-12	-12



30° HOSE ENDS

PART NO.	SIZE
-	-4
407-06	-6
407-08	-8
407-10	-10
407-12	-12



45° HOSE ENDS

PART NO.	SIZE
402-04	-4
402-06	-6
402-08	-8
402-10	-10
402-12	-12



60° HOSE ENDS

PART NO.	SIZE
-	-4
408-06	-6
408-08	-8
408-10	-10
408-12	-12



90° HOSE ENDS

PART NO.	SIZE
403-04	-4
403-06	-6
403-08	-8
403-10	-10
403-12	-12



120° HOSE ENDS

PART NO.	SIZE
-	-4
404-06	-6
404-08	-8
404-10	-10
404-12	-12



150° HOSE ENDS

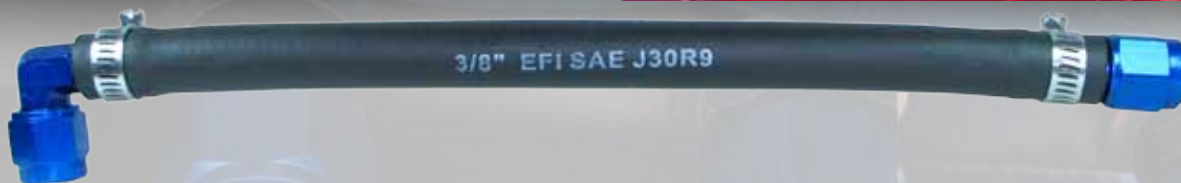
PART NO.	SIZE
-	-4
405-06	-6
405-08	-8
405-10	-10
405-12	-12



180° HOSE ENDS

PART NO.	SIZE
-	-4
406-06	-6
406-08	-8
406-10	-10
406-12	-12

444 SERIES HOSE & HOSE ENDS



444 SERIES EFI HOSE

We carry EFI hose for standard replacement and to suit our 411-413 series hose ends. A hose clip is required to secure this hose for correct use. Meets specification SAE 30R9. Manufactured with a NBR/SBR blended tube and black smooth cover with a polyester yard reinforcement.

Temperature Range: -40°C (-40°F) to 125°C (257°F)

SIZE	PART NO.	INSIDE DIA.		OUTSIDE DIA.		OPERATING PRESS.		BURST PRESS.		WEIGHT		BEND RADIUS	
		INCH	MM	INCH	MM	PSI	BAR	PSI	BAR	KG/M	LB/FT	INCH	MM
-5	444-05	0.313	7.94	0.580	14.73	225	15	900	62	0.18	0.12	3.00	76.20
-6	444-06	0.375	9.53	0.650	16.51	225	15	900	62	0.21	0.14	3.00	76.20
-8	444-08	0.500	12.70	0.805	20.45	225	15	900	62	0.29	0.19	8.00	203.20

411 SERIES HOSE ENDS

411 Series Hose Ends are a push on hose end for use with standard style hose and a hose clamp for securing. As an example, these are great for adapting aftermarket pumps and fuel rails to standard fuel hose.



STRAIGHT HOSE ENDS

PART NO.	SIZE	HOSE SIZE
411-06-05	-6	5/16"
411-06	-6	3/8"
411-08	-8	1/2"

45° HOSE ENDS

PART NO.	SIZE	HOSE SIZE
412-06-05	-6	5/16"
412-06	-6	3/8"
412-08	-8	1/2"

90° HOSE ENDS

PART NO.	SIZE	HOSE SIZE
413-06-05	-6	5/16"
413-06	-6	3/8"
413-08	-8	1/2"

SPEEDFLOW

BLACK SERIES



SPEEDFLOW BLACK SERIES IS HERE! OUR ENTIRE RANGE IS AVAILABLE IN A TUFF - BLACK ANODISED FINISH. TO ORDER ADD -BLK TO PART NO.

SPEEDFLOW

CUSTOM SERIES



SPEEDFLOW OFFERS A SPECIAL ORDER ANODISING SERVICE TO GIVE YOUR VEHICLE A COMPLETE CUSTOM LOOK! CALL FOR MORE INFO!

SELECTING THE RIGHT HOSE FOR THE APPLICATION!

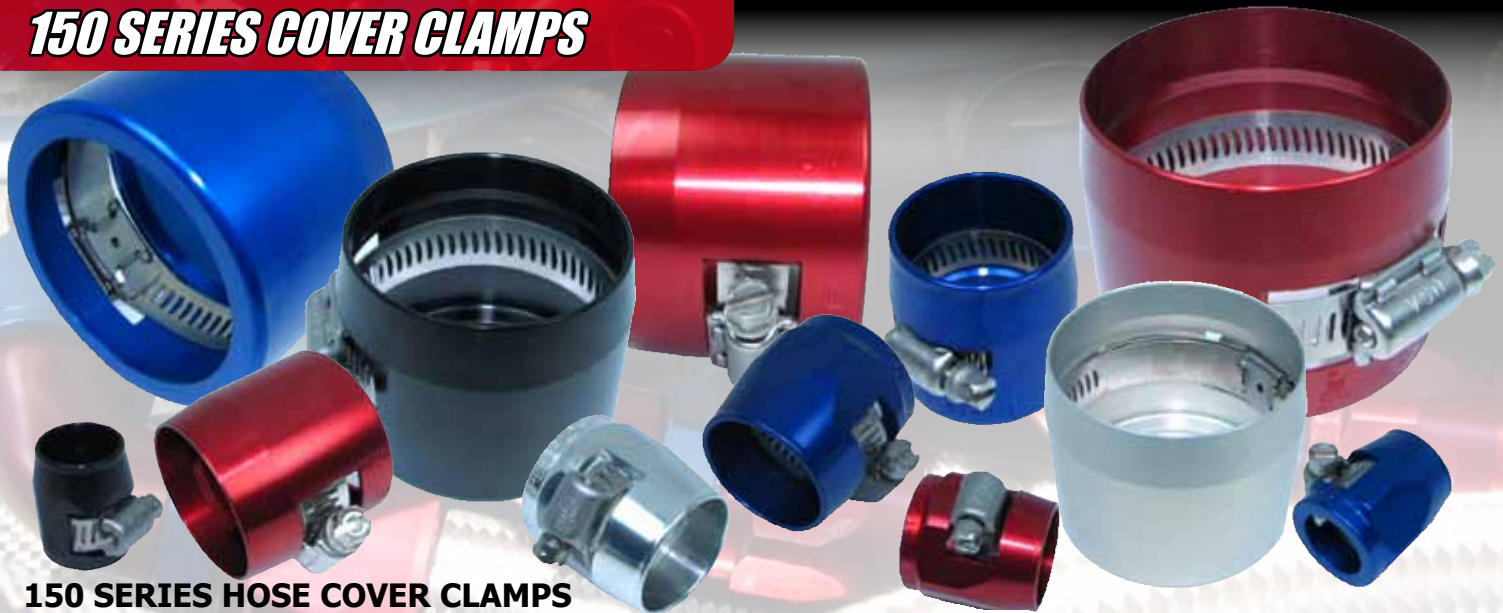
Due to the introduction of new blends of unleaded fuels (ULP) and fuel additives from all manufacturers in recent years it has become increasingly difficult to assure the compatibility of these fuels with the current hose constructions.

Currently the best hose option for use with unleaded petrol is the 200 series hose.

Below is a guide to uses of the 400 & 444 Series Hoses.

400 Series	Uses:	Fuel lines (methanol only), Low Pressure Oil Systems & Coolant Systems.
	Compatibility:	Methanol, Water & Oil.
	Restrictions:	Not recommended for use with unleaded fuels as it is known to allow the permeation of fuel smell through the layers as well as other possible issues.
444 Series	Uses:	EFI Fuel lines.
	Compatibility:	Unleaded Fuels.
	Restrictions:	Recommended for use with unleaded fuels. More testing is currently being conducted to test for permeation of fuel smell and compatibility with hose ends.

150 SERIES COVER CLAMPS



150 SERIES HOSE COVER CLAMPS

The perfect way to finish off the end of a hose to give it the look and feel of a competition hose! Manufactured in a huge range of sizes from quality aluminium and then beautifully anodised to suit your application! Smaller sizes are machined from hex bar, with larger sizes from -16 and up machined round. Each fitting includes a stainless steel worm drive clamp to give a maximum working pressure of 50 psi.



INSIDE DIA.		100 SERIES HOSE SIZE	STYLE	RAW PART NO.	BLUE PART NO.	NATURAL PART NO.	BLACK PART NO.	RED PART NO.
INCH	MM							
0.50	12.70	-4	Hexagon	150-04-A	150-04-B	150-04-N	150-04-P	150-04-R
0.55	13.84	-5	Hexagon	150-05-A	150-05-B	150-05-N	150-05-P	150-05-R
0.60	15.24	-6	Hexagon	150-06-A	150-06-B	150-06-N	150-06-P	150-06-R
0.69	17.53	-8	Hexagon	150-08-A	150-08-B	150-08-N	150-08-P	150-08-R
0.85	21.59	-10	Hexagon	150-10-A	150-10-B	150-10-N	150-10-P	150-10-R
0.98	24.89	-12	Hexagon	150-12-A	150-12-B	150-12-N	150-12-P	150-12-R
1.20	30.48	-16	Round	150-16-A	150-16-B	150-16-N	150-16-P	150-16-R
1.50	38.10	-20	Round	150-20-A	150-20-B	150-20-N	150-20-P	150-20-R
1.81	46.04		Round	151-20-A	151-20-B	151-20-N	151-20-P	151-20-R
1.94	49.21		Round	151-22-A	151-22-B	151-22-N	151-22-P	151-22-R
2.03	51.59		Round	151-24-A	151-24-B	151-24-N	151-24-P	151-24-R
2.09	53.18		Round	151-26-A	151-26-B	151-26-N	151-26-P	151-26-R
2.31	58.74		Round	151-28-A	151-28-B	151-28-N	151-28-P	151-28-R
2.38	60.33		Round	151-30-A	151-30-B	151-30-N	151-30-P	151-30-R



111 SERIES STAINLESS STEEL BRAIDED COVER

Available from your local distributors. Contact for more details and available sizes.

FEMALE SWIVEL ADAPTERS

We manufacture a large ranges of female swivel adapters to help join, adapt or split male fittings to any angle in any situation. Common uses for these are joining fuel pumps to tanks or filters, scavenge filters to sumps. The possibilities are endless!



FEMALE - MALE w/NPT PORT

PART NO.	SIZE	NPT PORT
140-04	-4	1/8"NPT
140-06	-6	1/8"NPT
140-08	-8	1/8"NPT
140-10	-10	1/8"NPT
140-12	-12	1/8"NPT



STRAIGHT FEMALE - FEMALE

PART NO.	SIZE
131-03-S	-3
131-04	-4
131-06	-6
131-06-08	-6 to -8
131-08	-8
131-10	-10
131-12	-12
131-16	-16

* -3 is only available in Steel.



45° FEMALE - FEMALE

PART NO.	SIZE
132-06	-6
132-08	-8
132-10	-10
132-12	-12
132-16	-16



90° FEMALE - FEMALE

PART NO.	SIZE
133-04	-4
133-06	-6
133-08	-8
133-10	-10
133-12	-12
133-16	-16



45° FEMALE - MALE

PART NO.	SIZE
142-04	-4
142-06	-6
142-08	-8
142-10	-10
142-12	-12
142-16	-16



90° FEMALE - MALE

PART NO.	SIZE
143-03-S	-3
143-04	-4
143-06	-6
143-08	-8
143-10	-10
143-12	-12
143-16	-16

* -3 is only available in Steel.



TEE - FEMALE ON BRANCH

PART NO.	SIZE
144-03-S	-3
144-03	-3
144-04	-4
144-06	-6
144-08	-8
144-10	-10
144-12	-12

* -3 Available in Aluminium & Steel. Add -S to part number for Steel.



TEE - FEMALE ON RUN

PART NO.	SIZE
145-03-S	-3
145-03	-3
145-04	-4
145-06	-6
145-08	-8
145-10	-10
145-12	-12



FEMALE - MALE STEP Y

PART NO.	FEMALE	MALE
146-08-06	-8	2 x -6



FEMALE - MALE Y

PART NO.	SIZE
147-06	-6
147-08	-8
147-10	-10
147-12	-12



AN FEMALE NPT ADAPTERS

PART NO.	FEMALE	NPT
906-03-02	-3	1/8"
906-06-06	-6	3/8"
906-08-06	-8	3/8"
906-10-08	-10	1/2"

SPEEDFLOW BLACK SERIES



**SPEEDFLOW BLACK SERIES IS HERE!
OUR ENTIRE RANGE IS AVAILABLE IN
A TUFF - BLACK ANODISED FINISH.
TO ORDER ADD -BLK TO PART NO.**

ALUMINIUM ADAPTERS

FUEL PUMP, POWER STEER & OIL FLARE ADAPTERS

We manufacture a full range of adapters to suit standard fuel pumps, filters, transmission adapters, power steering pumps and racks along with other specialised adapters to suit a wide variety of automotive applications.



FUEL LINES

PART NO.	SIZE	THREAD
702-06	-6	7/16"-24 Inv



TRANSMISSION & FUEL LINES

PART NO.	SIZE	THREAD
703-06	-6	1/2"-20 Inv
703-08	-8	1/2"-20 Inv



POWER STEER & FUEL LINES

PART NO.	SIZE	THREAD
704-06	-6	5/8"-18 Inv
704-08	-8	5/8"-18 Inv



POWER STEER LINES

PART NO.	SIZE	THREAD
705-06	-6	11/16"-18 Inv



CARTER CARBURETTOR

PART NO.	SIZE	THREAD
706-06	-6	5/8"-20 Washer



CHRYSLER OIL ADAPTER

PART NO.	SIZE	THREAD
707-10	-10	3/4"-18 Inv



GM GEARBOX ADAPTER

PART NO.	SIZE	THREAD
816-06-NPS	-6	1/4"NPS Washer



FORD EFI FUEL PRESSURE

PART NO.	SIZE	THREAD
816-04-01	-4	1/16"NPT

Check out our range of aluminium crush washers on page 28

EFI ADAPTERS

New for 2011 are these EFI fuel line adapters, converting the standard OEM fuel rail, tank or fuel line to a AN/JIC nipple.



FORD EFI ADAPTERS

PART NO.	SHANK	SIZE
714-06-435	0.435"	-6
714-06-550	0.550"	-6
714-08-550	0.550"	-8



GM EFI ADAPTERS

PART NO.	HOLE SIZE	SIZE
715-06-05	5/16" Return	-6
715-06-06	3/8" Pressure	-6



GM EFI TUBE ADAPTERS

PART NO.	TUBE SIZE	SIZE
716-06-05	5/16"	-6
716-06-06	3/8"	-6
716-08-06	3/8"	-8

SPEEDFLOW BLACK SERIES



SPEEDFLOW BLACK SERIES IS HERE!
OUR ENTIRE RANGE IS AVAILABLE IN A TUFF - BLACK ANODISED FINISH.
TO ORDER ADD -BLK TO PART NO.

ALUMINIUM BANJO & BOLTS

We also manufacture a full range of Banjo Bolts to suit our 14.5mm eye Banjo's. These are commonly used in fuel pumps, filters and carburettors.



BANJO 14.5mm EYE

PART NO.	SIZE	SIZE
720-06	-6	Single
721-06	-6 x 2	Double



METRIC BOLTS (BLACK)

PART NO.	THREAD	SUITS
723-06	M12x1.25	Dellorto
724-06	M12x1.5	Weber, Bosch
725-06	M14x1.5	Bosch, Turbo



IMPERIAL BOLTS (BLUE)

PART NO.	THREAD	SUITS
722-06	9/16"-24	Holley Carb
727-06	1/2"-20	CAV Filters
728-06	9/16"-18	General



BSPP BOLT (RED)

PART NO.	THREAD	SUITS
726-06	1/4"BSPP	Lucas Inj

ALUMINIUM ADAPTERS

CARBURETTOR ADAPTERS

We have redesigned these adapters to suit a wider variety of carburetors including Holley, Demon, Quick Fuel Technology plus other carburetors. The new Speedflow design will eliminate clearance issues that some carburetors encounter with certain styles of adapters!



HOLLEY DUAL FEED

PART NO.	THREAD	SIZE
700-06	7/8"-20	-6

HOLLEY DUAL FEED

PART NO.	THREAD	SIZE
700-08	7/8"-20	-8

HOLLEY & DEMON

PART NO.	THREAD	SIZE
701-06	9/16"-24	-6

HOLLEY & DEMON

PART NO.	THREAD	SIZE
701-08	9/16"-24	-8



HOLLEY DUAL FEED

PART NO.	THREAD	SIZE
700-08-L	7/8"-20	-8

HOLLEY DUAL FEED

PART NO.	THREAD	SIZE
710-06	7/8"-20	-6 Female
710-08	7/8"-20	-8 Female

HOLLEY & DEMON

PART NO.	THREAD	SIZE
701-08-L	9/16"-24	-8

HOLLEY & DEMON

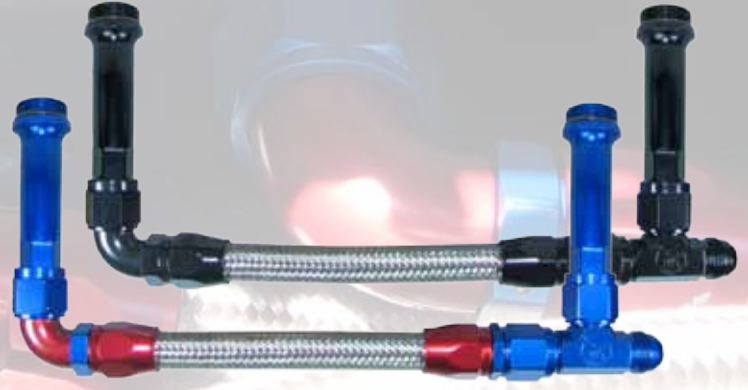
PART NO.	THREAD	SIZE
711-06	9/16"-24	-6 Female
711-08	9/16"-24	-8 Female



ALUMINIUM ADAPTERS

CARBURETTOR FUEL LINE KITS

Speedflow's popular carburettor kits are available to suit Holley, Demon, Quick Fuel Technology and other branded carburettor's. We have a choice of hose styles including our new 200 Series kits, 100 Series Braided and 120 Series Start-Lite®. We have Red & Blue or Black fittings as a standard option with custom colours available by special order. Please refer to hose pages for specific uses of each hose style.

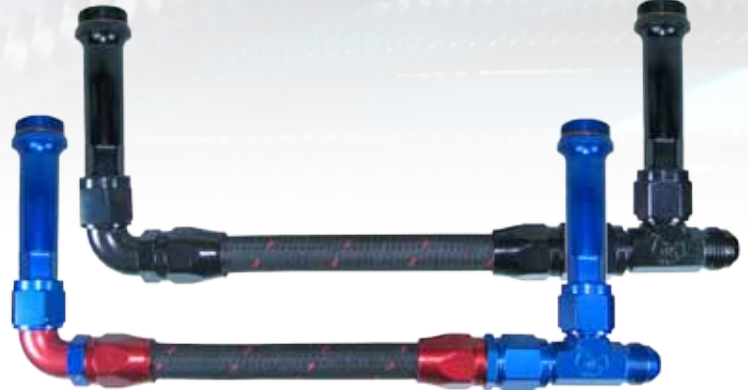


-6 DUAL FEED KITS - 100 SERIES BRAIDED HOSE

PART NO.		SUIT	INLET	HOSE
STD	BLACK	CARBURETTOR	SIZE	SIZE / STYLE
160-06	160-06-BLK	Holley Dual Feed	-6	-6 Braided Hose
161-06	161-06-BLK	Demon	-6	-6 Braided Hose

-8 DUAL FEED KITS - 100 SERIES BRAIDED HOSE

PART NO.		SUIT	INLET	HOSE
STD	BLACK	CARBURETTOR	SIZE	SIZE / STYLE
160-08	160-08-BLK	Holley Dual Feed	-8	-8 Braided Hose
161-08	161-08-BLK	Demon	-8	-8 Braided Hose
162-08	162-08-BLK	Dominator	-8	-8 Braided Hose



-6 DUAL FEED KITS - START-LITE®

PART NO.		SUIT	INLET	HOSE
STD	BLACK	CARBURETTOR	SIZE	SIZE / STYLE
160-06-A	160-06-A-BLK	Holley Dual Feed	-6	-6 Start-Lite® Hose
161-06-A	161-06-A-BLK	Demon	-6	-6 Start-Lite® Hose

-8 STYLE DUAL FEED KITS - START-LITE®

PART NO.		SUIT	INLET	HOSE
STD	BLACK	CARBURETTOR	SIZE	SIZE / STYLE
160-08-A	160-08-A-BLK	Holley Dual Feed	-8	-8 Start-Lite® Hose
160-08-A	160-08-A-BLK	Demon	-8	-8 Start-Lite® Hose
162-08-A	162-08-A-BLK	Dominator	-8	-8 Start-Lite® Hose



-6 DUAL FEED KITS - 200 SERIES BRAIDED HOSE

PART NO.		SUIT	INLET	HOSE
STD	BLACK	CARBURETTOR	SIZE	SIZE / STYLE
160-06-T	160-06-T-BLK	Holley Dual Feed	-6	-6 Teflon® Braided
161-06-T	161-06-T-BLK	Demon	-6	-6 Teflon® Braided

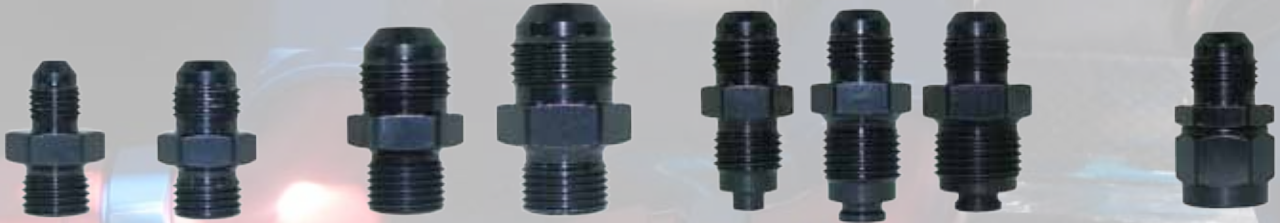
-8 DUAL FEED KITS - 200 SERIES BRAIDED HOSE

PART NO.		SUIT	INLET	HOSE
STD	BLACK	CARBURETTOR	SIZE	SIZE / STYLE
160-08-T	160-08-T-BLK	Holley Dual Feed	-8	-8 Teflon® Braided
161-08-T	161-08-T-BLK	Demon	-8	-8 Teflon® Braided
162-08-T	162-08-T-BLK	Dominator	-8	-8 Teflon® Braided

Teflon® is a registered trademark of DuPont.
Start-Lite® is a registered trademark of Eaton.

METRIC ADAPTERS

Metric adapters are some of the most common in today's modern performance hose & fitting industry. We have the largest range and are always expanding to incorporate new fittings for new technology available on the market. Check out the range below!



MALE METRIC ADAPTERS		
PART NO.	SIZE	SIZE
730-04	-4	M12 x 1.25
732-04	-4	M14 x 1.50
729-06	-6	M10 x 1.00
730-06-01	-6	M12 x 1.00
730-06	-6	M12 x 1.25
731-06	-6	M12 x 1.50
732-06	-6	M14 x 1.50
733-06	-6	M16 x 1.50
734-06	-6	M18 x 1.50
735-06	-6	M20 x 1.50
736-06	-6	M22 x 1.50
737-06	-6	M24 x 1.50

MALE METRIC ADAPTERS		
PART NO.	SIZE	SIZE
731-08	-8	M12 x 1.50
732-08	-8	M14 x 1.50
733-08	-8	M16 x 1.50
734-08	-8	M18 x 1.50
735-08	-8	M20 x 1.50
736-08	-8	M22 x 1.50
733-10	-10	M16 x 1.50
734-10	-10	M18 x 1.50
735-10	-10	M20 x 1.50
736-10	-10	M22 x 1.50
733-12	-12	M16 x 1.50
734-12	-12	M18 x 1.50
735-12	-12	M20 x 1.50
736-12	-12	M22 x 1.50

BUMP TUBE ADAPTER		
PART NO.	SIZE	SIZE
740-06	-6	M14 x 1.5
741-06	-6	M16 x 1.5
742-06	-6	M18 x 1.5

FEMALE INVERTED ADAPTER		
PART NO.	SIZE	SIZE
171-06-12	-6	M12 x 1.5
171-06-14	-6	M14 x 1.5

SPEEDFLOW CUSTOM SERIES



SPEEDFLOW OFFERS A SPECIAL ORDER ANODISING SERVICE TO GIVE YOUR VEHICLE A COMPLETE CUSTOM LOOK! CALL FOR MORE INFO!

Check out our range of aluminium crush washers on page 28



PUMP CHECK VALVE		
PART NO.	SIZE	SIZE
612-06	-6	M12 x 1.5
612-08	-8	M12 x 1.5



METRIC CAP	
PART NO.	SIZE
170-14	M14 x 1.5



METRIC PLUG	
PART NO.	SIZE
814-M12	M12 x 1.5
814-M14	M14 x 1.5
814-M16	M16 x 1.5



METRIC REDUCING BUSH		
PART NO.	MALE	FEMALE
912-M14-02	M14 x 1.5	1/8"NPT
912-M16-02	M16 x 1.5	1/8"NPT
912-M18-02	M18 x 1.5	1/8"NPT

BSPP ADAPTERS

British Standard Pipe Parallel (BSPP) is commonly found in older English vehicles in Engine Blocks, Oil Pumps, Fuel Filters and Oil Filter Adapters.



MALE BSP PARALLEL ADAPTER		
PART NO.	SIZE	BSPP SIZE
750-06	-6	1/4"BSPP
751-06	-6	3/8"BSPP
752-06	-6	1/2"BSPP
750-08	-8	1/4"BSPP
751-08	-8	3/8"BSPP
752-08	-8	1/2"BSPP

MALE BSP PARALLEL ADAPTER		
PART NO.	SIZE	BSPP SIZE
751-10	-10	3/8"BSPP
752-10	-10	1/2"BSPP
753-10	-10	5/8"BSPP
754-10	-10	3/4"BSPP
752-12	-12	1/2"BSPP
753-12	-12	5/8"BSPP
754-12	-12	3/4"BSPP



FEMALE BSPP ADAPTER		
PART NO.	SIZE	SIZE
760-10	-10	1/2"BSPP
760-12	-12	1/2"BSPP



BSPP BOTTLE ADAPTER		
PART NO.	SIZE	SIZE
759-08-02	1/8"NPT	1/2"BSPP
Flat Face Seal		

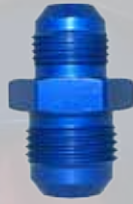
ALUMINIUM ADAPTERS

MALE AN/JIC ADAPTERS

If you need to join, tee, extend, reduce or expand a fitting, we have the below range to compliment every job!



MALE FLARE UNION	
PART NO.	SIZE
815-04	-4
815-06	-6
815-08	-8
815-10	-10
815-12	-12
815-16	-16
815-20	-20



MALE FLARE REDUCERS		
PART NO.	SIZE	SIZE
815-06-04	-6	-4
815-06-05	-6	-5
815-08-06	-8	-6
815-10-06	-10	-6
815-10-08	-10	-8
815-12-08	-12	-8
815-12-10	-12	-10
815-16-12	-16	-12



90° FLARE UNION	
PART NO.	SIZE
821-06	-6
821-08	-8
821-10	-10



MALE FLARE TEE	
PART NO.	SIZE
824-03	-3
824-04	-4
824-06	-6
824-08	-8
824-10	-10
824-12	-12
824-16	-16

BULKHEAD FITTINGS & ACCESSORIES

Bulkhead fittings are versatile and handy fittings when you want to pass through a fire wall, tank, panel, fuel cell or a vehicle bulkhead.

Basically a bulkhead fitting seals off an area with the use of the jam nut. There is no need for grommets and passing long lengths of hose through the vehicle. A real time saver!



STRAIGHT BULKHEAD	
PART NO.	SIZE
832-03	-3
832-04	-4
832-06	-6
832-08	-8
832-10	-10
832-12	-12
832-16	-16



45° BULKHEAD	
PART NO.	SIZE
837-03	-3
837-04	-4
837-06	-6
837-08	-8
837-10	-10
837-12	-12



90° BULKHEAD	
PART NO.	SIZE
833-03	-3
833-04	-4
833-06	-6
833-08	-8
833-10	-10
833-12	-12
833-16	-16

SPEEDFLOW
BLACK SERIES



SPEEDFLOW BLACK SERIES IS HERE!
OUR ENTIRE RANGE IS AVAILABLE IN
A TUFF - BLACK ANODISED FINISH.
TO ORDER ADD -BLK TO PART NO.



BULKHEAD TEE ON RUN	
PART NO.	SIZE
804-03	-3
804-04	-4
804-06	-6
804-08	-8



BULKHEAD TEE	
PART NO.	SIZE
834-03	-3
834-04	-4
834-06	-6
834-08	-8
834-10	-10
834-12	-12
834-16	-16



BULKHEAD NUT	
PART NO.	SIZE
924-03*	-3
924-04	-4
924-06	-6
924-08	-8
924-10	-10
924-12	-12
924-16	-16

* -3 also available in Steel. Add -S to part number.

SPEEDFLOW
CUSTOM SERIES

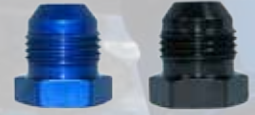


**SPEEDFLOW OFFERS A SPECIAL
ORDER ANODISING SERVICE TO GIVE
YOUR VEHICLE A COMPLETE CUSTOM
LOOK! CALL FOR MORE INFO!**

ALUMINIUM ADAPTERS

REDUCERS, EXPANDERS, EXTENSIONS, PLUGS & CAPS

Speedflow manufactures a comprehensive range of flare reducers, expanders and extensions. We are also extending our range of plugs and caps to include metric to complement our popular imperial sizes.



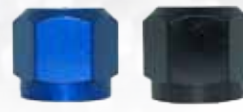
FLARE REDUCERS		
PART NO.	FEMALE	MALE
950-04-03	-4	-3
950-06-03	-6	-3
950-06-04	-6	-4
950-07-06*	5/8" SAE	-6
950-08-06	-8	-6
950-10-06	-10	-6
950-10-08	-10	-8
950-12-08	-12	-8
950-12-10	-12	-10
950-16-12	-16	-12

FLARE EXPANDERS		
PART NO.	FEMALE	MALE
951-03-04	-3	-4
951-04-06	-4	-6
951-06-08	-6	-8
951-08-10	-8	-10
951-10-12	-10	-12
951-12-16	-12	-16

FLARE EXTENSION	
PART NO.	SIZE
952-06	-6
952-08	-8
952-10	-10
952-12	-12

FLARE PLUG	
PART NO.	SIZE
806-03	-3
806-04	-4
806-06	-6
806-08	-8
806-10	-10
806-12	-12
806-16	-16

* To adapt Ford power steering to -6 male.



IN HEX O-RING PLUG	
PART NO.	SIZE
814-03	-3
814-04	-4
814-06	-6
814-08	-8
814-10	-10
814-12	-12
814-16	-16

METRIC PLUG	
PART NO.	SIZE
814-M12	M12 x 1.5
814-M14	M14 x 1.5
814-M16	M16 x 1.5

FLARE CAP	
PART NO.	SIZE
820-03	-3
820-04	-4
820-06	-6
820-08	-8
820-10	-10
820-12	-12
820-16	-16
820-20	-20

NPT PLUGS	
PART NO.	NPT SIZE
932-01	1/16"
932-02	1/8"
932-04	1/4"
932-06	3/8"
932-08	1/2"
932-12	3/4"
932-16	1"

TUBE ADAPTERS, NUTS & SLEEVES

At Speedflow, we are increasing our stock lines of our tube adapters to include 5/16" tube nuts & sleeves and compression style tube adapters. Use the 818-05, 819-05 with the new 815-06-05 to adapt a 5/16" tube to a -6 hose.



MALE TUBE ADAPTER		
PART NO.	SIZE	TUBE SIZE
618-06-05	-6	5/16"
618-06-06	-6	3/8"
618-08-08	-8	1/2"

TUBE ADAPTER SPARES	
PART NO.	DESCRIPTION
618-C05	5/16" Compression Olive
618-C06	3/8" Compression Olive
618-C08	1/2" Compression Olive

ALUMINIUM TUBE NUTS	
PART NO.	SIZE
818-03	-3 · 7/16" Nut
318-03	-3 · 1/2" Nut Black
818-04	-4
818-05	-5
818-06	-6
818-08	-8
818-10	-10
818-12	-12
818-16	-16

ALUMINIUM TUBE SLEEVES		
PART NO.	SIZE	TUBE SIZE
819-03	-3	3/16"
819-04	-4	1/4"
819-05	-5	5/16"
819-06	-6	3/8"
819-08	-8	1/2"
819-10	-10	5/8"
819-12	-12	3/4"
819-16	-16	1"

ALUMINIUM ADAPTERS

NPT ADAPTERS

We have a large selection of NPT to male flare adapters in Straight, 45° and 90°. Speedflow fittings are beautifully made in a high flow billet one piece design.



STR MALE NPT ADAPTERS

PART NO.	SIZE	NPT
816-03	-3	1/8"
816-03-04	-3	1/4"
816-04-01	-4	1/16"
816-04	-4	1/8"
816-04-04	-4	1/4"
816-04-06	-4	3/8"
816-06-02	-6	1/8"
816-06	-6	1/4"
816-06-06	-6	3/8"
816-06-08	-6	1/2"
816-08-04	-8	1/4"
816-08	-8	3/8"
816-08-08	-8	1/2"
816-08-12	-8	3/4"
816-10-06	-10	3/8"
816-10	-10	1/2"
816-10-12	-10	3/4"
816-12-08	-12	1/2"
816-12	-12	3/4"
816-12-16	-12	1"
816-16-12	-16	3/4"
816-16	-16	1"

45° MALE NPT ADAPTERS

PART NO.	SIZE	NPT
823-03	-3	1/8"
823-04	-4	1/8"
823-06-02	-6	1/8"
823-06	-6	1/4"
823-06-06	-6	3/8"
823-08	-8	3/8"
823-08-08	-8	1/2"
823-10	-10	1/2"
823-12-08	-12	1/2"
823-12	-12	3/4"

90° MALE NPT ADAPTERS

PART NO.	SIZE	NPT
822-03	-3	1/8"
822-04	-4	1/8"
822-04-04	-4	1/4"
822-06-02	-6	1/8"
822-06	-6	1/4"
822-06-06	-6	3/8"
822-06-08	-6	1/2"
822-08-04	-8	1/4"
822-08	-8	3/8"
822-08-08	-8	1/2"
822-10-06	-10	3/8"
822-10	-10	1/2"
822-10-12	-10	3/4"
822-12-08	-12	1/2"
822-12	-12	3/4"
822-16-12	-16	3/4"
822-16	-16	1"

NPT REDUCERS

PART NO.	MALE	FEMALE
912-04-02	1/4"	1/8"
912-06-02	3/8"	1/8"
912-06-04	3/8"	1/4"
912-08-02	1/2"	1/8"
912-08-04	1/2"	1/4"
912-08-06	1/2"	3/8"
912-12-04	3/4"	1/4"
912-12-06	3/4"	3/8"
912-12-08	3/4"	1/2"
912-16-08	1"	1/2"
912-16-12	1"	3/4"

SPEEDFLOW BLACK SERIES



SPEEDFLOW BLACK SERIES IS HERE! OUR ENTIRE RANGE IS AVAILABLE IN A TUFF - BLACK ANODISED FINISH. TO ORDER ADD -BLK TO PART NO.



METRIC REDUCING BUSH

PART NO.	MALE	FEMALE
912-M14-02	M14 x 1.5	1/8"NPT
912-M16-02	M16 x 1.5	1/8"NPT
912-M18-02	M18 x 1.5	1/8"NPT



TEE W/NPT ON BRANCH

PART NO.	SIZE	NPT
825-03	-3	1/8"
825-04	-4	1/8"
825-06	-6	1/4"
825-08	-8	3/8"
825-10	-10	1/2"
825-12	-12	3/4"

TEE W/NPT ON RUN

PART NO.	SIZE	NPT
826-03	-3	1/8"
826-04	-4	1/8"
826-06	-6	1/4"
826-08	-8	3/8"
826-10	-10	1/2"
826-12	-12	3/4"

NPT PLUGS

PART NO.	NPT
932-01	1/16"
932-02	1/8"
932-04	1/4"
932-06	3/8"
932-08	1/2"
932-12	3/4"
932-16	1"

AN FEMALE NPT ADAPTERS

PART NO.	FEMALE	NPT
906-03-02	-3	1/8"
906-06-06	-6	3/8"
906-08-06	-8	3/8"
906-10-08	-10	1/2"

ALUMINIUM ADAPTERS

NPT ADAPTERS

We have a large selection of NPT to male flare adapters in Straight, 45° and 90°. Speedflow fittings are beautifully made in a high flow billet one piece design.



FEMALE NPT COUPLER		
PART NO.	NPT SIZE	
910-02	1/8"	
910-04	1/4"	
910-06	3/8"	
910-08	1/2"	
910-12	3/4"	



MALE NPT NIPPLE		
PART NO.	NPT SIZE	
911-02	1/8"	
911-04	1/4"	
911-06	3/8"	
911-08	1/2"	
911-12	3/4"	



90° FEMALE - MALE		
PART NO.	NPT SIZE	
914-02	1/8"	
914-04	1/4"	
914-06	3/8"	
914-08	1/2"	



FEMALE NPT TEE		
PART NO.	NPT SIZE	
917-02	1/8"	
917-04	1/4"	
917-06	3/8"	
917-08	1/2"	



FEMALE - MALE EXTENSION		
PART NO.	NPT SIZE	
372-02	1/8"	



45° FEMALE - MALE		
PART NO.	NPT SIZE	
915-02	1/8"	



FEMALE TEE - MALE ON RUN		
PART NO.	NPT SIZE	
916-02	1/8"	



FLARE TEE W/NPT BRANCH			
PART NO.	SIZE	NPT	
918-04-02	-4	1/8"	

O-RING PORT ADAPTERS

We manufacture a full range of O-Ring Port Adapters often found in Dry Sump Pumps, Fuel Rails, Regulators, Fuel Pumps and Filters.



STR MALE PORT ADAPTERS			
PART NO.	SIZE	PORT	
920-04	-4	-4	
920-04-08	-4	-8	
920-06	-6	-6	
920-06-08	-6	-8	
920-06-10	-6	-10	
920-08	-8	-8	
920-08-06	-8	-6	
920-08-10	-8	-10	
920-10	-10	-10	
920-10-08	-10	-8	
920-10-12	-10	-12	
920-10-16	-10	-16	
920-12	-12	-12	
920-12-08	-12	-8	
920-12-10	-12	-10	
920-12-16	-12	-16	
920-16	-16	-16	
920-16-10	-16	-10	
920-16-12	-16	-12	
920-20	-20	-20	



STR PORT ADAPTER - LONG		
PART NO.	SIZE	PORT
920-16-L	-16	-16



IN HEX O-RING PLUG	
PART NO.	PORT
814-03	-3
814-04	-4
814-06	-6
814-08	-8
814-10	-10
814-12	-12
814-16	-16



45° MALE PORT ADAPTERS		
PART NO.	SIZE	PORT
923-06	-6	-6
923-08	-8	-8
923-10	-10	-10
923-12	-12	-12
923-12-10	-12	-10



90° MALE PORT ADAPTERS		
PART NO.	SIZE	PORT
922-04	-4	-4
922-06	-6	-6
922-08	-8	-8
922-08-06	-8	-6
922-08-10	-8	-10
922-10	-10	-10
922-10-08	-10	-8
922-12	-12	-12
922-12-10	-12	-10



FEMALE O-RING TEE	
PART NO.	PORT
938-06	-6
938-08	-8
938-10	-10
938-12	-12

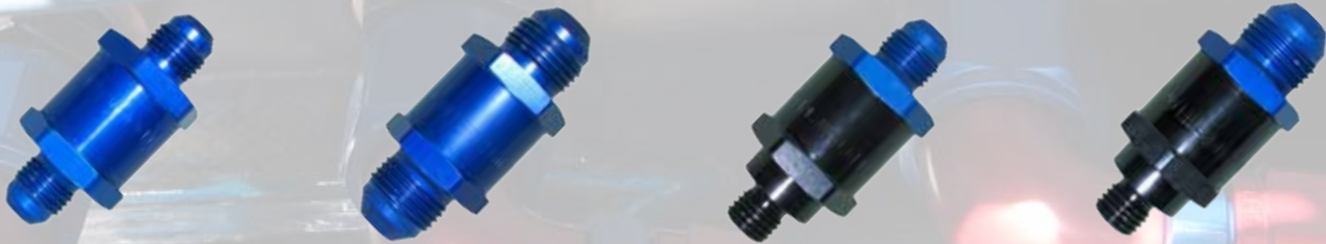


MALE PORT UNION		
PART NO.	PORT	PORT
921-06-08	-6	-8
921-08-08	-8	-8
921-08-10	-8	-10
921-10-10	-10	-10

ALUMINIUM ADAPTERS

ONE WAY, BLOWER & BALL VALVES

Speedflow has been manufacturing quality valves for over 25 years which have evolved into the quality parts we now have available. Our redesigned one way poppet valves have been proven to be very popular in every aspect of the performance industry!



SPEEDFLOW NON-RETURN VALVE - INLINE

PART NO.	INLET SIZE	OUTLET SIZE	APPLICATIONS
610-06	-6	-6	Use these one-way poppet valves in a -6 or -8 line. Positively stops fluid from returning!
610-08	-8	-8	

SPEEDFLOW NON-RETURN VALVE - FUEL PUMP SPECIFIC

PART NO.	INLET SIZE	OUTLET SIZE	APPLICATIONS
612-06	M12 x 1.5	-6	Screw directly into Fuel Pumps with M12 x 1.5 threads to hold line pressure!
612-08	M12 x 1.5	-8	



Custom Anodised - Black & Natural



BLOWER RELIEF VALVE

PART NO.	THREAD	APPLICATIONS
620-04	7/16"-20	Relieves pressure in supercharger gear cases.

BALL VALVES

PART NO.	SIZE	APPLICATIONS
650-06	-6	We assemble these strong positive ball valves with either -6 or -8 male fittings.
650-08	-8	

TEMPERATURE & TURBO ADAPTERS

We are introducing in 2011 a new range of turbo adapters and a larger range of temp adapters - keep an eye out for further parts!



TEMPERATURE PROBE ADAPTERS

PART NO.	SIZE	PROBE THREAD	MATERIAL
660-06	3/8" NPT Male	5/8"-18 Female	Aluminium
660-08	1/2" NPT Male	5/8"-18 Female	Aluminium

Adapt mechanical temp probes to NPT holes.

TURBOCHARGER ADAPTERS

PART NO.	SIZE	HOLE CENTRES	MATERIAL
463-01	-8 Female	38-44mm (slotted)	Aluminium
463-02	-10 Female	52mm	Aluminium

Due mid 2011 - contact us for more information.

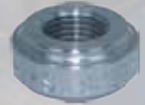


The Speedflow Research & Development Supercharged Outlaw Altered in action at Sydney Dragway.

Photo: Badger Photography - www.badgerphotography.com.au

WELD ON FITTINGS, CAPS AND NECKS

We have assembled a huge range of weld on fittings to make the job of fabricating a tank, radiator or your speciality job a breeze. When you are fabricating you don't have the time or need to search for the right part, that is why we have this complete range available right off the shelf!



EGT & O2 STEEL WELD ON

PART NO.	SIZE	STYLE
989-04-S	7/16"-20	Male K-Type
989-M18-S	M18 x 1.5	Female
M18 x 1.5 Steel Plug available soon!		

ALUMINIUM ORB FEMALE

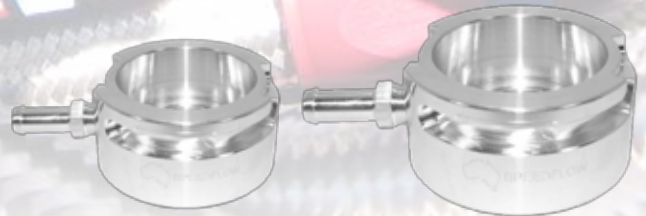
PART NO.	SIZE
990-04-D	-4
990-06-D	-6
990-08-D	-8
990-10-D	-10
990-12-D	-12
990-16-D	-16

ALUMINIUM NPT FEMALE

PART NO.	SIZE
997-02-D	1/8"NPT
997-04-D	1/4"NPT
997-06-D	3/8"NPT
997-08-D	1/2"NPT
997-12-D	3/4"NPT

STEEL NPT FEMALE

PART NO.	SIZE
997-02-S	1/8"NPT
Perfect for EGT probe adapters	



ALUMINIUM MALE

PART NO.	SIZE
999-03-D	-3
999-04-D	-4
999-06-D	-6
999-08-D	-8
999-10-D	-10
999-12-D	-12
999-16-D	-16
999-20-D	-20

STEEL MALE

PART NO.	SIZE
999-03-S	-3
999-04-S	-4
999-06-S	-6
999-08-S	-8
999-10-S	-10
999-12-S	-12
999-16-S	-16

ALUMINIUM RADIATOR NECKS

PART NO.	I.D. SIZE	O.D. SIZE	APPLICATIONS
462-01	32mm	43mm	Japanese Neck (Small)
462-02	40mm	57mm	Standard Neck (Large)



WELD ON FILLER NECKS

PART NO.	WELD NECK	NECK I.D.	CAP	CAP O.D.	HEIGHT	SUGGESTED APPLICATIONS
460-16	Aluminium	25mm	Aluminium	44mm	28mm	Water Tanks, Overflow Tanks
460-16-S	Steel	25mm	Aluminium	44mm	28mm	Differential Filler, Steel Tanks
460-24	Aluminium	38mm	Aluminium	57mm	30mm	Valve Covers, Fuel Tanks, Oil Tanks
460-32	Aluminium	52mm	Aluminium	70mm	30mm	Fuel Tanks, Valve Covers, Oil Tanks

REPLACEMENT CAPS

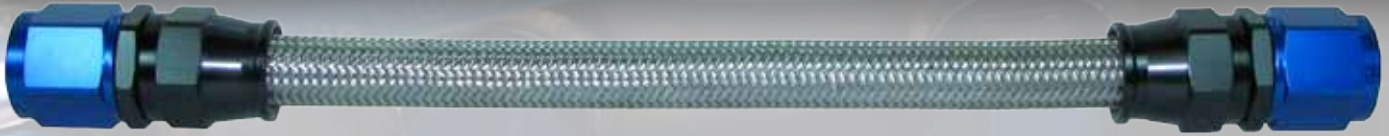
PART NO.	APPLICATIONS	COLOUR
C4600-16	Suit 460-16 Cap	Raw - Standard Custom Colours Blue, Natural, Black, Red
C4600-24	Suit 460-24 Cap	
C4600-32	Suit 460-32 Cap	



REPLACEMENT O-RINGS

PART NO.	APPLICATIONS
905-16	Suit 460-16 Cap
905-24	Suit 460-24 Cap
905-32	Suit 460-32 Cap

200 SERIES HOSE



200 SERIES TEFLON® BRAIDED HOSE

Speedflow 200 Series Teflon® Braided Hose is constructed from a PTFE (Teflon®) inner tube compatible with all brake & clutch fluids, oil & fuels. The outer stainless steel braided cover adds fire and heat resistance and gives the hose a high pressure rating. Sizes -6 and up are manufactured with an anti-static PTFE tube suitable for use as main fuel lines. 200 Series has been an industry standard since the mid 60's when it was first used as brake lines to reduce expansion and provide a much firmer "pedal" and more consistent braking. Since then this hose has evolved to be recommended in clutch, pressure lines, turbo lines and fuel systems.

Temperature Range: -70°C (-94°F) to 260°C (500°F).

SIZE	PART NO.	INSIDE DIA.		OUTSIDE DIA.		OPERATING PRESS.		BURST PRESS.		WEIGHT		BEND RADIUS	
		INCH	MM	INCH	MM	PSI	BAR	PSI	BAR	KG/M	LB/FT	INCH	MM
-3	200-03	0.125	3.18	0.250	6.35	4250	290	12750	870	0.060	0.040	1.50	38.10
-3 Cover	200-03-C	0.125	3.18	0.310	7.87	4250	290	12750	870	0.088	0.060	1.50	38.10
-4	200-04	0.188	4.78	0.312	7.92	4110	280	12350	840	0.075	0.050	2.00	50.80
-6	200-06	0.313	7.95	0.466	11.84	3380	230	10140	690	0.135	0.090	4.00	101.60
-8	200-08	0.415	10.54	0.559	15.21	2790	190	8380	570	0.149	0.100	5.25	133.40
-10	200-10	0.535	13.60	0.526	13.35	2200	150	6610	450	0.210	0.140	8.00	203.30

Teflon® is a registered trademark of DuPont.

SELECTING THE RIGHT HOSE FOR THE APPLICATION!

- 200 Series Uses: Brake Lines (off road use only), Clutch Lines, Fuel Systems (-6, -8 & -10 with antistatic carbon lining), Turbo oil feed Hose, Coolant Systems, Oil Pressure Systems, Gauge lines & Power Steering.
- Compatibility: Brake Fluids, Unleaded Petrol, Methanol, Water, & Oil.
Ideal for use with Unleaded fuel.
- Restrictions: No known automotive restrictions.

200 SERIES ALUMINIUM HOSE ENDS

Speedflow's also manufactures a range of aluminium hose ends to suit the 200 Series hose for those who are conscious of weight. The aluminium range comes standard in black & blue anodised, with custom anodising is available upon request.



STRAIGHT HOSE ENDS

PART NO.	SIZE
201-03-D	-3
201-04-D	-4
201-06-D	-6
201-08-D	-8
201-10-D	-10

45° HOSE ENDS

PART NO.	SIZE
202-03-D	-3
202-04-D	-4
202-06-D	-6
202-08-D	-8
202-10-D	-10

90° HOSE ENDS

PART NO.	SIZE
203-03-D	-3
203-04-D	-4
203-06-D	-6
203-08-D	-8
203-10-D	-10

120° HOSE ENDS

PART NO.	SIZE
204-06-D	-6
204-08-D	-8



150° HOSE ENDS

PART NO.	SIZE
205-06-D	-6
205-08-D	-8

180° HOSE ENDS

PART NO.	SIZE
206-06-D	-6
206-08-D	-8

SPEEDFLOW BLACK SERIES IS HERE!
OUR ENTIRE RANGE IS AVAILABLE IN
A TUFF - BLACK ANODISED FINISH.
TO ORDER ADD -BLK TO PART NO.

**SPEEDFLOW OFFERS A SPECIAL
ORDER ANODISING SERVICE TO GIVE
YOUR VEHICLE A COMPLETE CUSTOM
LOOK! CALL FOR MORE INFO!**

200 SERIES HOSE ENDS

200 SERIES STEEL HOSE ENDS

Speedflow's steel hose ends are manufactured in all popular threads, styles and angles to accommodate any application. All of these fittings are plated using Electroless Nickel process, which gives a uniform coating that provides a high degree of corrosion resistance and a bright finish that is appealing to the eye!



STRAIGHT HOSE ENDS	
PART NO.	SIZE
201-03	-3
201-04	-4



STEPS STR HOSE END		
PART NO.	NUT SIZE	HOSE SIZE
201-04-03	-4	-3



45° HOSE ENDS	
PART NO.	SIZE
202-03	-3
202-04	-4



90° HOSE ENDS	
PART NO.	SIZE
203-03	-3
203-04	-4

200 SERIES FEMALE & MALE ADAPTER HOSE ENDS

Speedflow's range of 200 Series Hose Ends include a huge selection of brake, clutch and special purpose hose ends in a variety of threads in both Metric and Imperial to suit all American, European, Japanese and Asian vehicles!



MALE BULKHEAD		
PART NO.	HOSE SIZE	THREAD
220-03	-3	3/8"-24
223-04	-4	7/16"-20
224-04	-4	1/2"-20
221-03	-3	M10 x 1.0
222-03	-3	M10 x 1.25



WASHER SEAL MALE		
PART NO.	HOSE SIZE	THREAD
250-03	-3	3/8"-24
253-03	-3	7/16"-20
251-03	-3	M10 x 1.0
252-03	-3	M10 x 1.25
254-04	-4	M12 x 1.0

Also suit Inverted Seat applications



FEMALE - INVERTED SEAT		
PART NO.	HOSE SIZE	THREAD
230-03	-3	3/8"-24
234-04	-4	7/16"-20
233-03	-3	7/16"-24
233-04	-4	7/16"-24
231-03	-3	M10 x 1.0
232-03	-3	M10 x 1.25
235-04	-4	M12 x 1.0



FEMALE - CONCAVE SEAT		
PART NO.	HOSE SIZE	THREAD
242-03	-3	3/8"-24
240-03	-3	M10 x 1.0
241-03	-3	M10 x 1.0
243-03	-3	M10 x 1.25
244-04	-4	M12 x 1.25

241-03 has a smaller O.D. and does not include a C-Clip Groove.



LIFESAVERS		
PART NO.	HOSE SIZE	TUBE OD
260-03	-3	3/16"
260-04	-4	1/4"

These handy fittings are designed to be braised to a tube to adapt to a hose.



INVERTED SEAT FEMALE		
PART NO.	HOSE SIZE	THREAD
270-03-D	-3	M12 x 1.5
273-03-D	-3	1/8"BSPP
273-03-04-D	-3	1/4"BSPP



90° INVERTED SEAT FEMALE		
PART NO.	HOSE SIZE	THREAD
271-03-D	-3	M12 x 1.5



FLAT SEAT FEMALE		
PART NO.	HOSE SIZE	THREAD
272-03-D	-3	1/8"BSPP



See page 30 for installation instructions.

1mm RESTRICTOR	
PART NO.	HOSE SIZE
399-03	-3
399-04	-4



ENS STEEL SOCKETS	
PART NO.	HOSE SIZE
298-03	-3
298-04	-4



ALUMINIUM SOCKETS	
PART NO.	HOSE SIZE
298-03-D	-3
298-04-D	-4
298-06-D	-6
298-08-D	-8
298-10-D	-10

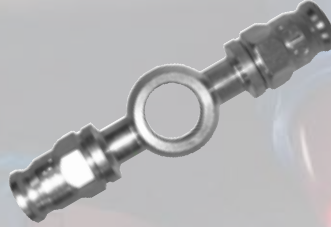


REPLACEMENT OLIVES	
PART NO.	HOSE SIZE
299-03	-3
299-04	-4
299-06	-6
299-08	-8
299-10	-10

200 SERIES BANJO'S & BOLTS

200 SERIES BANJO HOSE ENDS - STEEL & ALUMINIUM

We carry a full range of 200 Series Banjo Hose Ends in different sizes and angles. Used commonly in brake & Clutch systems to replace OEM style or where clearance is an issue.



STRAIGHT 8mm EYE

PART NO.	SIZE	MATERIAL
209-03	-3	Steel

STRAIGHT 10mm (3/8") EYE

PART NO.	SIZE	MATERIAL
210-03	-3	Steel
210-03-D	-3	Aluminium

DOUBLE 10mm (3/8") EYE

PART NO.	SIZE	MATERIAL
210-03-03	-3	Steel

STRAIGHT 7/16" EYE

PART NO.	SIZE	MATERIAL
213-03	-3	Steel



30° BEND 10mm (3/8") EYE

PART NO.	SIZE	MATERIAL
211-03	-3	Steel
211-03-D	-3	Aluminium

20° SIDE BEND 10mm EYE

PART NO.	SIZE	MATERIAL
212-03	-3	Steel
212-03-D	-3	Aluminium

90° BEND 10mm (3/8") EYE

PART NO.	SIZE	MATERIAL
219-03	-3	Steel

300 SERIES BANJO BOLTS

We carry a comprehensive range of banjo bolts to suit American, European & Japanese threads found in everything - from brakes to turbos and engine blocks. If you need a banjo bolt, we will have something to suit your application!



SINGLE BANJO BOLT - STEEL

PART NO.	THREAD
300-03	3/8"-24
300-04	7/16"-20
300-05	7/16"-24
303-03	1/8"BSPP
301-02	M8 x 1.0
301-03	M10 x 1.0
302-03	M10 x 1.25
304-03	M10 x 1.5
301-04	M12 x 1.0
302-04	M12 x 1.25
304-04	M12 x 1.5

DBL BANJO BOLT - STEEL

PART NO.	THREAD
305-03	3/8"-24
306-03	M10 x 1.0
307-03	M10 x 1.25
308-03	M10 x 1.5

SINGLE BANJO BOLT - ALLOY

PART NO.	THREAD
300-03-D	3/8"-24
301-03-D	M10 x 1.0
302-03-D	M10 x 1.25

DBL BANJO BOLT - ALLOY

PART NO.	THREAD
305-03-D	3/8"-24
306-03-D	M10 x 1.0
307-03-D	M10 x 1.25



Check out our range of aluminium crush washers on page 28

200 SERIES ADAPTERS

310 SERIES BANJO TO MALE FLARE

We manufacture a large range of banjo adapters to give the flexibility of a banjo with a male to adapt to hose ends, female joiners or tube nuts.



10mm (3/8") EYE BANJO		
PART NO.	SIZE	MATERIAL
310-03	-3	Steel
310-04	-4	Steel

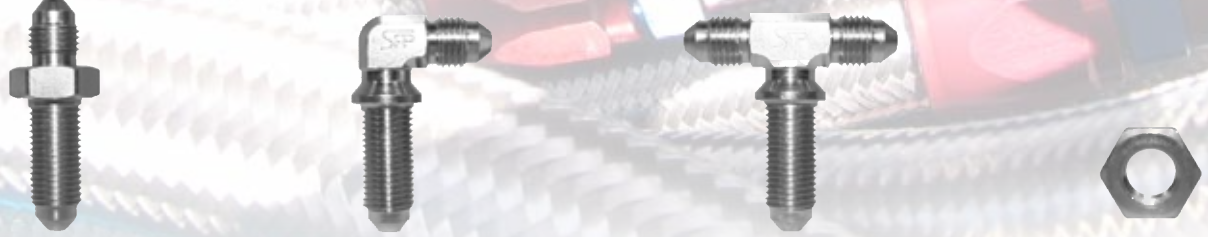
DOUBLE 10mm EYE BANJO		
PART NO.	SIZE	MATERIAL
310-03-03	-3	Steel

7/16" EYE BANJO		
PART NO.	SIZE	MATERIAL
311-03	-3	Steel
311-04	-4	Steel

12mm EYE BANJO		
PART NO.	SIZE	MATERIAL
314-04	-4	Steel

200 SERIES MALE FLARE ADAPTERS

Speedflow's manufactures a comprehensive range of adapters to suit their ever increasing range of hose ends! If you need to adapt a gauge, a calliper, clutch or brake master cylinder or any -3 & 4 application - we have what you need!



STRAIGHT BULKHEAD	
PART NO.	SIZE
320-03	-3

90° BULKHEAD	
PART NO.	HOSE SIZE
323-03	-3

BULKHEAD TEE	
PART NO.	SIZE
324-03	-3

BULKHEAD NUT	
PART NO.	SIZE
924-03-S	-3



MALE INVERTED FLARE		
PART NO.	SIZE	THREAD
340-03	-3	3/8"-24
347-03	-3	3/8"-24 Long
350-04	-4	3/8"-24
341-03	-3	7/16"-24
341-04	-4	7/16"-24
344-03	-3	M10 x 1.0
345-03	-3	M10 x 1.25

SPECIAL INVERTED FLARE		
PART NO.	SIZE	THREAD
341-03-03	-3	7/16"-24
342-03-03	-3	1/2"-20
343-03-03	-4	9/16"-18
348-03-03	-3	9/16"-20
346-03-03	-3	M12 x 1.0

MALE DUAL SEAT		
PART NO.	SIZE	THREAD
347-03	-3	3/8"-24
344-03	-3	M10 x 1.0
351-04	-4	M10 x 1.0
345-03	-3	M10 x 1.25
346-03-03	-3	M12 x 1.0
357-04	-4	M12 x 1.0

MALE UNION	
PART NO.	HOSE SIZE
360-03	-3
360-04	-4
360-04-03	-4 to -3



MALE WASHER SEAL		
PART NO.	SIZE	THREAD
350-03	-3	3/8"-24
353-03	-3	7/16"-20
355-03	-3	7/16"-24
354-03	-3	1/8"BSPP
349-03	-3	M8 x 1.0
351-03	-3	M10 x 1.0
352-03	-3	M10 x 1.25
356-03	-3	M10 x 1.5

MALE WASHER SEAL		
PART NO.	SIZE	THREAD
350-04	-4	3/8"-24
353-04	-4	7/16"-20
349-04	-4	M8 x 1.0
351-04	-4	M10 x 1.0
352-04	-4	M10 x 1.25
356-04	-4	M10 x 1.5
357-04	-4	M12 x 1.0
358-04	-4	M12 x 1.25
359-04	-4	M12 x 1.5

ALUMINIUM WASHER SEAL		
PART NO.	SIZE	THREAD
350-03-D	-3	3/8"-24
351-03-D	-3	M10 x 1.0
352-03-D	-3	M10 x 1.25



Check out our range of aluminium crush washers on page 28

200 SERIES ADAPTERS

200 SERIES MALE FLARE ADAPTERS

Speedflow manufactures a comprehensive range of adapters to suit their ever increasing range of hose ends! If you need to adapt a gauge, a calliper, clutch or brake master cylinder or any -3 & 4 application - we have what you need!



GAUGE & SENDER ADAPTERS		
PART NO.	SIZE	FEMALE
370-03	-3	1/8"NPT
370-04	-4	1/8"NPT



90° GAUGE ADAPTERS		
PART NO.	SIZE	FEMALE
373-03	-3	1/8"NPT
373-04	-4	1/8"NPT



MALE NPT ADAPTERS		
PART NO.	SIZE	FEMALE
380-03	-3	1/8"NPT
380-03-04	-3	1/4"NPT
380-04	-4	1/8"NPT



MALE BSP ADAPTERS		
PART NO.	SIZE	FEMALE
381-03	-3	1/8"BSP
381-04	-4	1/8"BSP



90° MALE NPT ADAPTERS		
PART NO.	SIZE	FEMALE
383-03	-3	1/8"NPT



FEMALE - MALE EXTENSION	
PART NO.	NPT SIZE
372-02	1/8"



-3 HOSE SUPPORT	
PART NO.	HOSE SIZE
296-03	-3



FEMALE TUBE NUT	
PART NO.	SIZE
390-03	-3 suit 3/16" Tube

This hose support is made from aluminium and is designed to slide over -3 hose without PVC cover.

WASHERS & O-RINGS

A comprehensive range of aluminium crush washers to suit our range of adapters, always replace sealing washers when servicing fittings. We have replacement Nitrile (NBR) O-Rings to suit our O-Ring Port Adapters, Plugs and other AN sized fittings.



ALUMINIUM WASHERS	
PART NO.	SIZE (I.D.)
901-02	8mm - 5/16"
901-03	10mm - 3/8"
901-04	7/16"
901-05	12mm - 1/2"
901-06	14mm - 9/16"

ALUMINIUM WASHERS	
PART NO.	SIZE (I.D.)
902-06	16mm - 3/8"BSPP
901-08	18mm
901-10	22mm - 7/8"
902-04	1/4"BSPP
902-08	1/2"BSPP

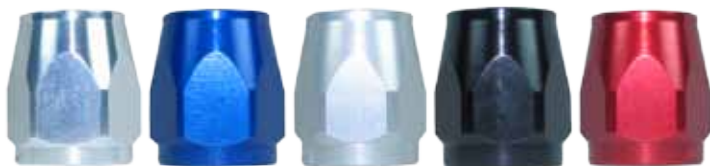


O-RINGS		
PART NO.	SIZE	I.D. SIZE
905-03	-3	3/8"
905-04	-4	7/16"
905-06	-6	9/16"
905-08	-8	3/4"
905-10	-10	7/8"

O-RINGS		
PART NO.	SIZE	I.D. SIZE
905-12	-12	1-1/16"
905-16	-16	1-5/16"
905-20	-20	1-5/8"
905-24	Suit 460-24 Cap	
905-32	Suit 460-32 Cap	

HOSE END REPLACEMENT PARTS

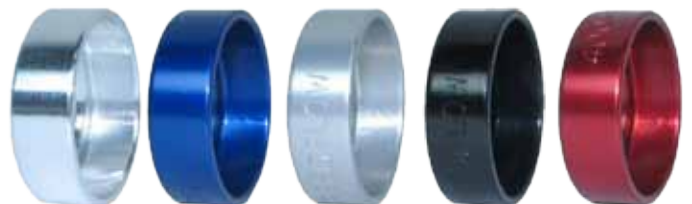
Speedflow has 100 Series sockets, centre nipples and 400 Series collars available as spare parts. Great for damaged parts or custom coloured items!



100 SERIES HOSE SOCKETS		
PART NO.	SIZE	COLOUR
C1000-	-04, -06, -08, -10, -12, -16, -20	Raw, Blue, Natural, Black, Red



100 SERIES HOSE INSERTS		
PART NO.	SIZE	COLOUR
C1020-	-04, -06, -08, -10, -12, -16, -20	Black only



400 SERIES HOSE COLLARS		
PART NO.	SIZE	COLOUR
C4000-	-04, -06, -08, -10, -12	Raw, Blue, Natural, Black, Red

HOSE CUTTERS, VICE JAWS & SPANNERS

At Speedflow we manufacture our own range of spanners and vice jaws and supply quality hose cutters to make a perfect cut.



SPEEDFLOW - ALUMINIUM SPANNERS

PART NO.	COLOUR	OVERALL LENGTH	SIZE	SPANNER SIZE
430-04	Natural	119mm	-4	9/16"
430-06	Black	139mm	-6	11/16"
430-08	Blue	147mm	-8	7/8"
430-10	Red	154mm	-10	1"
430-12	Natural	162mm	-12	1-1/4"
430-16	Black	188mm	-16	1-1/2"
430-20	Blue	195mm	-20	1-13/16"

Speedflow have years of research and development, using this knowledge they have designed their latest AN spanners with the customer in mind! These are made from 6061 grade aluminium giving them strength, with a shorter handle that makes the spanner more usable in tight spaces. They have radiused edges for comfort and are anodised in Red, Blue, Black or Clear for a beautiful long lasting appearance.

SPEEDFLOW - VICE JAWS

PART NO.	DESCRIPTION
431-01	Aluminium Vice Jaw Set

These aluminium vice jaw inserts are made in Australia by Speedflow Products from 6061 grade aluminium and beautifully black anodised. They are designed to protect your hose ends during assembly process by holding the fitting hex securely in the V-grooves. Each jaw has a strong magnetic backing to hold them against the vice. Sold in pairs.



200 SERIES HOSE CUTTERS

PART NO.	DESCRIPTION
432-03	Hose Cutter -3 & -4

The 200 Series cutter is a hand sized cutter that is designed to cut through -3 & -4 hose.

100 & 200 SERIES HOSE CUTTERS

PART NO.	DESCRIPTION
432-12	Hose Cutter -3 to -10

These 1m long cutters make cutting braided hose a breeze. Does not leave residue in the hose as found when cutting with a cut off blade or hacksaw.

400 SERIES HOSE CUTTERS

PART NO.	DESCRIPTION
433-12	Hose Cutter -4 to -12

The 400 Series cutter is a ratcheting action that slices straight through any rubber hose and leaves a square end, perfect for 400 Series Hose Ends!

DECALS, BANNERS & T-SHIRTS

2011 will see Speedflow promote our brand to a new level with new and exciting merchandising options being available! Keep in contact with your distributors for the very latest in our range, including our retail display boards due mid 2011!



SPEEDFLOW DECALS

PART NO.	DESCRIPTION
SF-200	Rectangle 210 x 50mm
SF-250	Die Cut 250 x 60mm
SF-400	Die Cut 400 x 90mm
SF-1000	Shop Front Sticker 850 x 190mm

SPEEDFLOW BANNERS

PART NO.	DESCRIPTION
SF-5000	100 & 200mm Wide Barrier Tape
SF-5001	Banner 1100 x 220mm
SF-5005	Tear Drop Banner - Special Order

Please contact us for ordering info for Tear Drop Banner

SPEEDFLOW T-SHIRTS

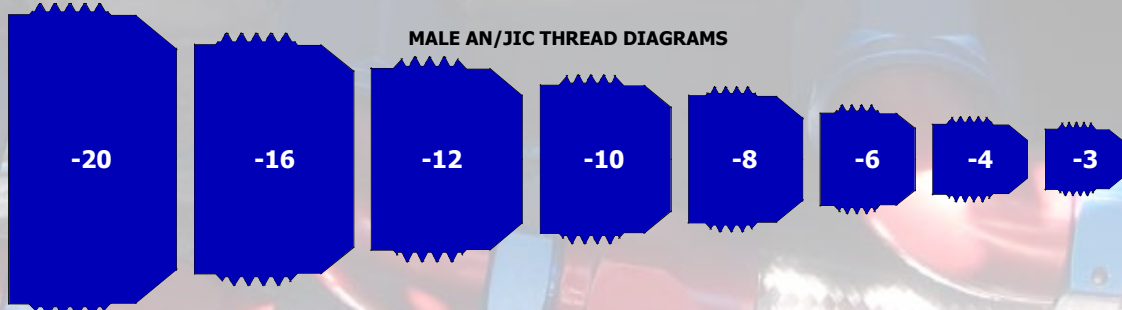
PART NO.	DESCRIPTION
SF-Tee	White T-Shirt S,M,L,XL,2XL

Hanes 5.5oz 100% Cotton T-Shirts
Screen printed with Speedflow logo on front chest and Speedflow custom design on back.
Due January 2011

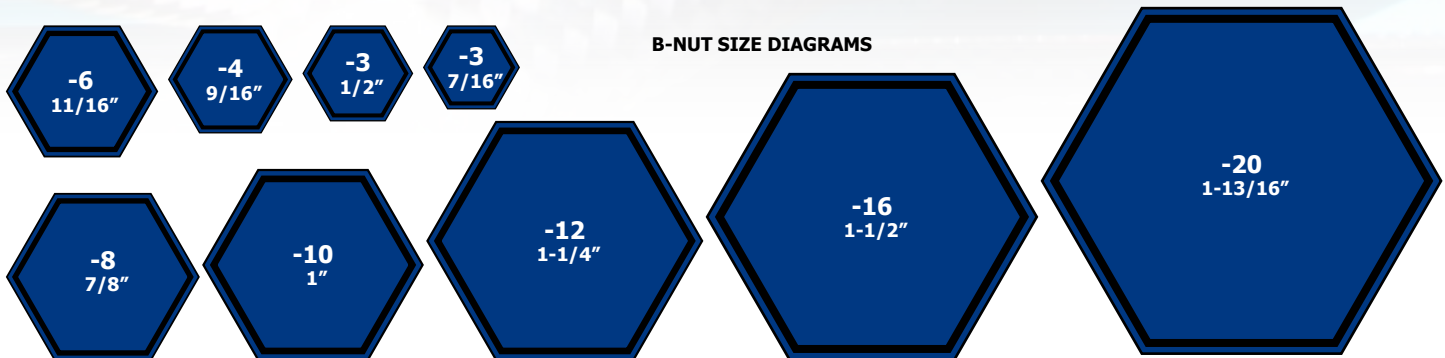
TECHNICAL INFORMATION

AN/JIC FITTING IDENTIFICATION CHART

Speedflow's hose and fittings sizes are primarily based on the AN/JIC imperial system. Dash sizes relate to hose or tube sizes in 1/16" increments. The drawings below depict actual sizes of our AN/JIC thread sizes shown in the appropriate dash number. Listed in the chart below all the relevant data relating to AN/JIC threads and diagrams for the B-Nut or Wire Nut sizes.

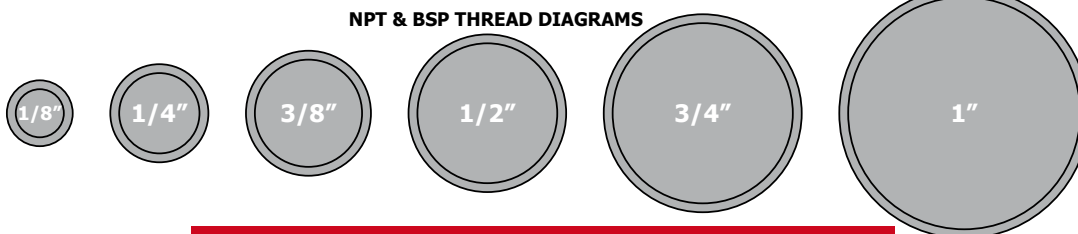


AN/JIC FITTING & TUBE INFORMATION					
DASH SIZE	BRAIDED HOSE I.D.	HARD TUBE O.D.	AN/JIC THREAD	AN FLARE BORE SIZE	AN/JIC WIRE NUT HEX
-3	1/8"	3/16"	3/8" x 24	0.125"	1/2"
-4	7/32"	1/4"	7/16" x 20	0.171"	9/16"
-6	11/32"	3/8"	9/16" x 18	0.298"	11/16"
-8	7/16"	1/2"	3/4" x 16	0.391"	7/8"
-10	9/16"	5/8"	7/8" x 14	0.484"	1"
-12	11/16"	3/4"	1-1/16" x 12	0.608"	1-1/4"
-16	7/8"	1"	1-5/16" x 12	0.844"	1-1/2"
-20	1-1/8"	1-1/4"	1-5/8" x 12	1.078"	1-13/16"



NPT & BSP FITTING IDENTIFICATION CHART

NPT & BSP sizes do not measure their given size. Use the diagrams below to determine the correct size. The chart below displays all information in regards to NPT, BSP & BSPP thread pitches and diameters.



NPT & BSP FITTING INFORMATION				
NPT & BSP PART NO.	TAPER NPT	TAPER BSP	PARALLEL BSPP	APPROXIMATE O.D.
-02	1/8" x 27	1/8" x 28	1/8" x 28	0.38"
-04	1/4" x 18	1/4" x 19	1/4" x 19	0.52"
-06	3/8" x 18	3/8" x 19	3/8" x 19	0.66"
-08	1/2" x 14	1/2" x 14	1/2" x 14	0.83"
-10			5/8" x 14	0.89"
-12	3/4" x 14	3/4" x 14	3/4" x 14	1.04"
-16	1" x 11.5	1" x 11	1" x 11	1.31"
-20	1-1/4" x 11.5	1-1/4" x 11	1-1/4" x 11	1.65"

HOW TO ASSEMBLE 100 & 120 SERIES HOSE

One of the most commonly asked questions - how to assemble braided hose and fittings! Here are some simple steps to ensure you correctly assemble Speedflow fittings to 100 & 120 Series Hose.



Tools Required:

- 100 Series Cutters
- Tape
- Vice
- Vice Jaws
- Lubricant
- Open End Spanner



Step 1: Select the correct size hose for the fittings and measure the length. This can be easily cut using Speedflow's 100 Series cutters. Other acceptable means of cutting are: Fine tooth hacksaws, cut-off blades. Wrap the hose with tape and make sure the cut is square and any residue is trimmed and cleaned.



Step 2: Remove tape from the cut hose, remove the socket from the hose end and secure in a vice with Speedflow vice jaws. Insert the hose into the socket with a twisting pushing motion until the hose is just short of the socket threads.



Step 3: Take the socket and hose from the vice, install the hose end into the vice jaws and liberally coat the threads and centre nipple. Insert the hose on the centre nipple and engage the threads of the socket to the hose end - be careful not to cross thread! Hand tighten as far as possible.



Step 4: Using a correctly sized spanner, complete tightening until there is a gap between the socket and hose end is approx 1mm. Align the flats for a professional looking finish. Remove from the vice and repeat the process to complete the assembly.



Step 5: Inspect, clean and pressure test the hose, and you are now ready to install the assembly on your ride!

HOW TO ASSEMBLE 200 SERIES HOSE

200 Series hose ends are made up of three components; the main body, the socket and aluminium olive. Check out these simple instructions to easily assemble our Speedflow 200 Series hose and fittings.



Tools Required:

- 200 Series Cutters
- Pliers
- Small Screwdriver
- Lubricant
- Vice
- Vice Jaws
- Open End Spanner



Step 1: Select the correct size hose for the fittings and measure to the desired length. This can be easily cut using Speedflow's 200 Series cutters. Other acceptable means of cutting are: Fine tooth hacksaws, cut-off blades. Make sure the cut is square and any residue is trimmed and cleaned.



Step 2: Ensure the hose is round by gently squeezing with pliers. At this stage, slide the hose end socket over the hose and insert the hose end to check the I.D. is round. Remove the hose end, take a small flat screwdriver and slowly separate the braid from the O.D. of the Teflon® tube. Take care not to damage the inner tube, you should aim to spread the braid so that the olive slips on easily.



Step 3: Take the olive and start the tapered end between the Teflon® and braid. It is very important not to get any strands of braid under the olive as this will cause leaks! Now push the olive into the hose against the side of your vice or a strong flat surface. Check that the inner tube is seated and square on the inside step of the olive.



Step 4: Place your vice jaws in a vice, secure the hose end and lubricate the threads with a touch of oil. Now push the hose over the hose end nipple, there will be slight resistance. Now slide the socket over the threads and start screwing this on by hand.



Step 5: Select the correct sized spanner for your job, check out our charts on the previous page. Tighten the socket on the hose end until there is a gap of approx 1mm. We recommend tightening to align the flats for a professional finish. Remove from the vice and repeat for the opposite end.



Step 6: Your completed hose is now ready to be installed on your vehicle, it is advised to clean, inspect and pressure test the assembly before using. Always replace the olive if repairing or maintaining a hose end.



ASSEMBLY INSTRUCTIONS

HOW TO ASSEMBLE 400 SERIES PUSHLOCK HOSE

400 Series hoses can be the easiest to assemble, just follow the instructions below for correct installation.



Step 1: Select the correct size hose for the fittings and measure to the desired length. This can be easily cut using Speedflow's 400 Series cutters. Other acceptable means of cutting are: Sharp knife or blade. Make sure the cut is square and any residue is trimmed and cleaned.



Step 2: Install the hose end in the vice jaws and secure. If you are assembling a angled fitting, use an adapter of the correct size in the vice jaws and screw the angled hose end to this, make sure it is tight. This allows you to use push the hose on without the hose end moving. Lubricate the tail, we use liquid soap as this will dry unlike oil or grease!



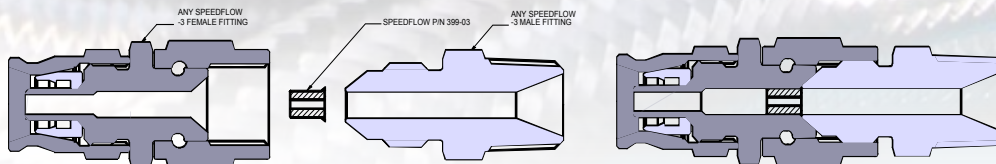
Step 3: Locate the hose on the end of the tail. With force push the hose. You will encounter resistance as the hose is pushed up the tail and over the barbs, try and do this in one motion until the hose is tight under the collar. The process can be made easier by sitting the hose in hot water for about 30 seconds before you start.



Step 3: Remove from the vice and repeat for the opposite end. Your completed hose is now ready to be installed on your vehicle, it is advised to clean, inspect and pressure test the assembly before using.

399 SERIES RESTRICTOR INSTRUCTIONS

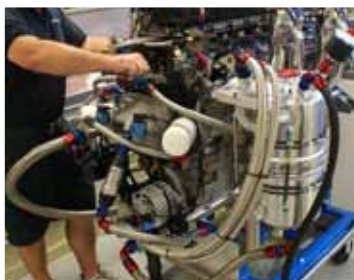
Check out the diagram and instructions below for the correct installation of our 399 Series restrictors into a -3 or -4 Hose End.



Step 1: Disconnect your hose end from the adapter, select the correct size restrictor, -3 (399-03) -4 (399-04)

Step 2: Take the restrictor and insert into the hose end until it seats. Take care that it does not fall out.

Step 3: Connect the hose end back to the adapter and tighten as per normal. The hose is now ready to use with the 1mm restrictor.



WARRANTY INFORMATION

Speedflow Products Pty Ltd warrants that said products will be free from defects in materials and workmanship for 1 year from the date of original purchase, and this warranty is limited to repair or replacement of parts. This warranty shall not exceed the original purchase price of the goods, nor shall Speedflow Products Pty Ltd be responsible for special, incidental, or consequential damages. Any defective parts should be returned to the point where purchased for any warranty adjustment. In the event the customer cannot get satisfaction from the dealer, you may contact Speedflow Products Pty Ltd for return authorisation. Product must then be shipped postage prepaid, along with proof of purchase to:

Speedflow Products Pty Ltd
3-5 Coolabah Drive
Taree
NSW 2430
Australia

This warranty does not apply to any product subject to damage in transit, accident, misuse or abuse following date of original purchase.

Products in this catalog are for use on off-road automotive, motorcycle and competition marine applications only. Some items in this catalog may not be in stock. Speedflow Products Pty Ltd reserves the right to substitute products of equal quality for those actually photographed and represented in this catalog. Please call for availability.

Printed in Australia.
Copyright 2011



SPEEDFLOW ADVERTISING

Speedflow Products are advertised in national publications, Motorsport News, Auto Action, Dragster Australia, Inside Speedway, Extreme Magazine and Zoom Magazine along with a range of other media sources. Keep an eye on our advertising for new products and the latest information!

SPEEDFLOW

Australian Made Performance Hose Fittings

- Made in Australia since 1983!
- Superior Design
- One Piece Formed Bends
- Complete Range -3 to -20
- Strongest & Most Compact
- Billet 6061 Aluminium
- Hard Coat Anodising!
- ENS Coated Steel
- Choice of Motorsport Professionals!

SPEEDFLOW BLACK SERIES
Speedflow Black Series is here! Speedflow's entire range is available off the shelf in our tuff black anodised finish.

DON'T GAMBLE WITH CHEAP IMITATIONS... INSIST ON SPEEDFLOW!

Contact your State Distributor for a Speedflow Stockist near you!

NSW - Motorsport Connections - 1800 242 910
NSW - Redline Performance - 02 8723 8888
QLD - Performance Wholesale - 07 3808 1986
VIC - Victorian Speed Pro - 03 9794 5177
SA - Automotive Performance Distributors - 08 8363 5566
WA - Go Gear Racing Services - 08 9443 4400

SPEEDFLOW CUSTOM SERIES
Speedflow offers a special order anodising service to give your vehicle a complete custom look! Call for more info!

www.speedflow.com.au **Tech Line 1800 242 918**

Available from:



Proud Members of

SPEEDFLOW

Speedflow Products Pty Ltd

3-5 Coolabah Drive · Taree · NSW 2430 · Australia

Tel: +61 2 6552 6144 · Freecall 1800 242 918 · Fax: +61 2 6551 0253

www.speedflow.com.au · email: products@speedflow.com.au

ABN: 93 002 676 833

SPEEDFLOW

Australian Made Performance Hose Fittings



2011 Product Catalogue